

Cloverdale Industrial Park

2917 37th St NW

Mandan, ND



Kyle Holwagner, CCIM, SIOR

701.400.5373

Kyle@DanielCompanies.com

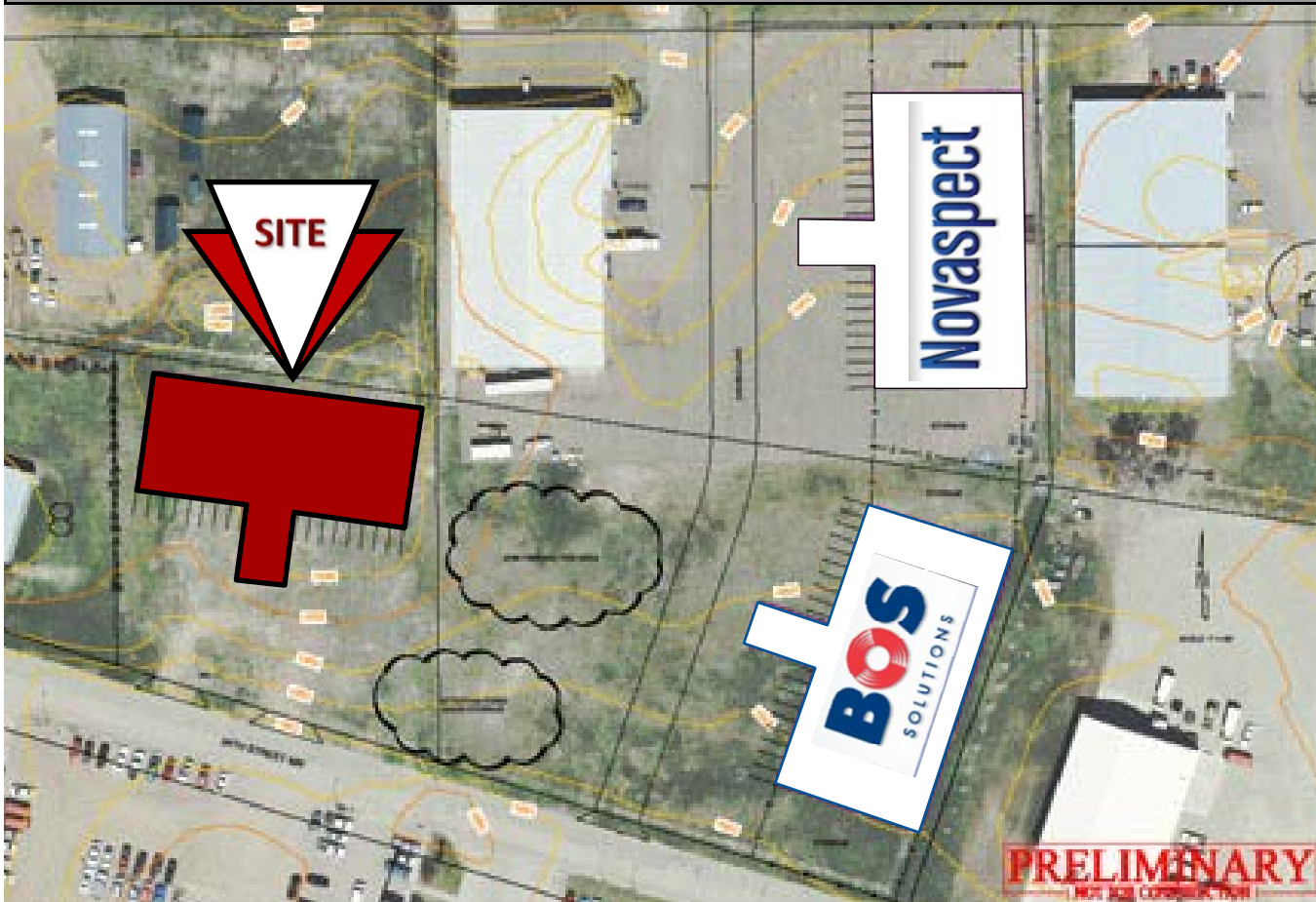
Kristyn Steckler, Market Coordinator

701.527.0138

Kristyn@DanielCompanies.com

DanielCompanies.com

DESTINATION	MILES	DRIVE TIME
BEULAH, ND	72.81 Miles	1 Hour 16 Min.
DICKINSON, ND	93.58 Miles	1 Hour 23 Min.
MINOT, ND	117.10 Miles	1 Hour 59 Min.
NEW TOWN, ND	155.68 Miles	2 Hours 51 Min.
WILLISTON, ND	221.60 Miles	3 Hours 31 Min.



Build to Suit

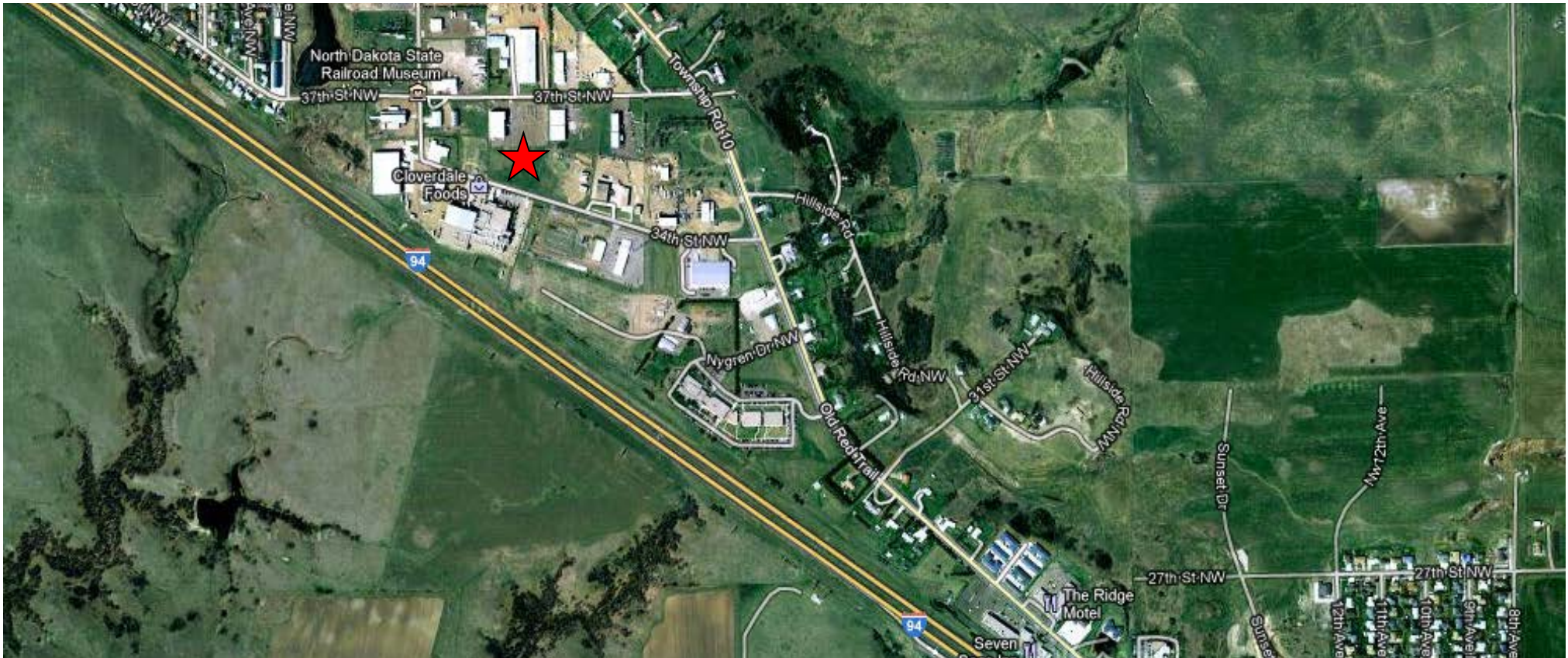
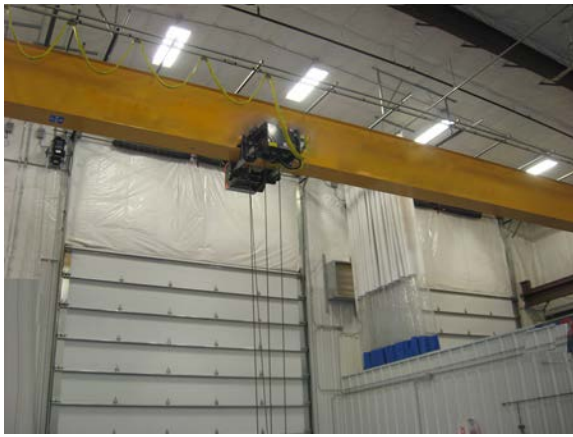
10,000 - 30,000 sf tenants

- 6-8 months construction based on permitting
- 20' sidewalls
- Loading Docks
- Yard Space
- Custom Office Layout
- Easy Truck Access
- Direct access to Old Red Trail and I-94 Interstate
- In City Limits, Zoned Industrial
- City Water
- Utilities: Natural Gas, 3 Phase Power, T1 Capable telephone, City Sanitary Sewer, City Street Lighting



Kyle Holwagner, CCIM, SIOR
701.400.5373
Kyle@DanielCompanies.com

Kristyn Steckler, Market Coordinator
701.527.0138
Kristyn@DanielCompanies.com



Kyle Holwagner, CCIM, SIOR
701.400.5373
Kyle@DanielCompanies.com

Kristyn Steckler, Market Coordinator
701.527.0138
Kristyn@DanielCompanies.com

DanielCompanies.com



DANIEL COMPANIES

The Leader in Commercial Real Estate

Serving commercial real estate clients with unmatched market knowledge, experience, and a well-deserved reputation for integrity. They know the Bismarck-Mandan commercial real estate market better than anyone. This powerful team delivers powerful results.



Bill Daniel, CCIM, Broker
701.220.2455
Bill@DanielCompanies.com



Kyle Holwagner, CCIM, SIOR
701.400.5373
Kyle@DanielCompanies.com



Taylor Daniel, Commercial REALTOR®
701.391.4262
Taylor@DanielCompanies.com

701.223.8488
304 E ROSSER AVE #200
BISMARCK, ND 58501



ICSC CCIM SIOR
INDIVIDUAL MEMBERS

RETAIL • INVESTMENTS • OFFICE • INDUSTRIAL • SITE SELECTION • LEASING • BUILD TO SUIT • BROKERAGE