

Grand Pacific Center

400 E Broadway Ave. Suite 300 - Bismarck, ND

1,216 sf



Taylor Daniel, Commercial REALTOR®

701.391.4262

Taylor@DanielCompanies.com

Bill Daniel, CCIM, Broker

701.220.2455

Bill@DanielCompanies.com

DanielCompanies.com



- Lease Price:
\$15.50 psf with
3% Annual Increase
- Lease Space: 1,216 sf
- Full Service Lease
- Downtown Landmark
Building
- Two Elevators
- Building Conference Room &
Break Room
- Great Location and View
Corner of N 4th St and Broadway Av
- Newly Renovated Exterior &
Interior Lobby



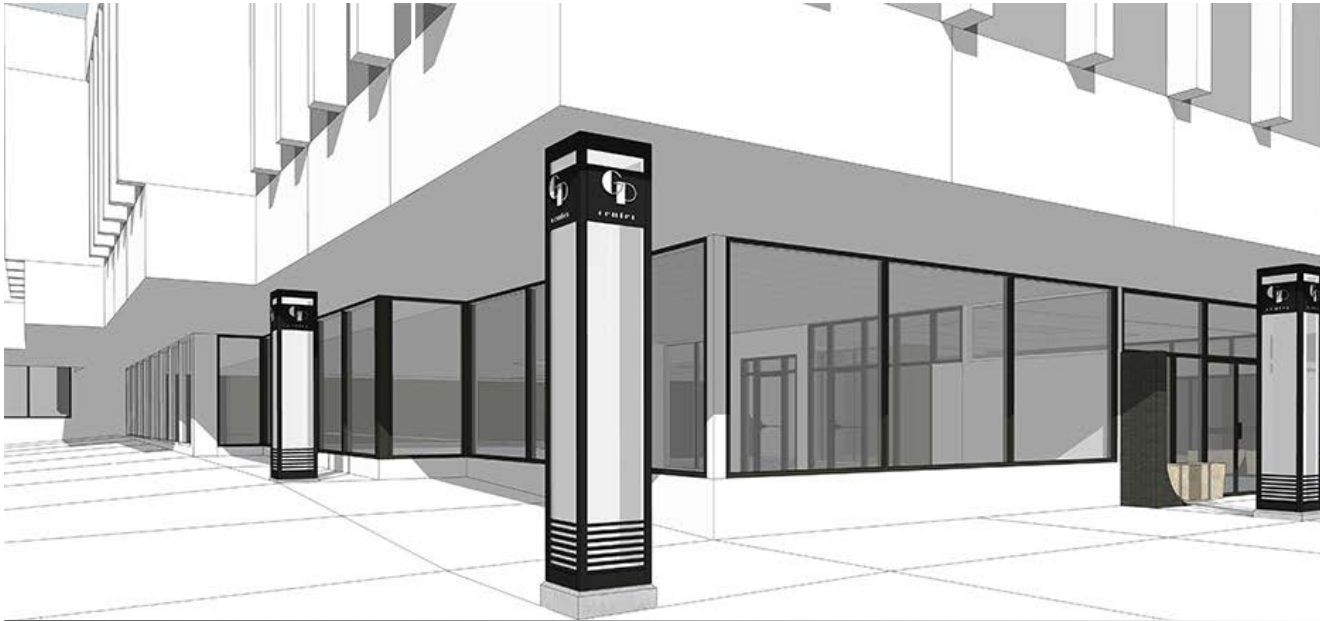
Broker does not guarantee the information describing this property. Interested parties are advised to independently verify the information through personal inspectors or with appropriate



Taylor Daniel, Commercial REALTOR®
701.391.4262
Taylor@DanielCompanies.com

Bill Daniel, CCIM, Broker
701.220.2455
Bill@DanielCompanies.com

DanielCompanies.com



The Grand Pacific Outdoor Plaza anchors the center of downtown Bismarck. The new custom backlit columns provide a great ambiance as you approach the building.



Walk Score

89

400 E. Broadway Ave has a Walk Score of 89 out of 100. Very Walkable – Most errands can be accomplished on foot.



Taylor Daniel, Commercial REALTOR®
701.391.4262
Taylor@DanielCompanies.com

Bill Daniel, CCIM, Broker
701.220.2455
Bill@DanielCompanies.com

DanielCompanies.com

Grand Pacific Center

400 E Broadway Ave. Suite 300 - Bismarck, ND
1,216 sf

Lease Terms

- Three to five year lease
- Lease price include a \$7 psf operating cost estimate with year end adjustment

Parking

- Parking at city ramps (Tenant pays for parking)

Building Highlights

- Bismarck's most prominent downtown office building
- Completely renovated lobby
- Conference room located on 3rd floor (sign-in sheet for tenant's to reserve)
- Large common break room in lower level
- Work-out room in lower level
- Two elevators

Potential Uses

- Energy Companies
- Professional services
- Government offices
- Accounting firm
- Legal offices
- Medical offices
- Engineering firm

In The "Heart of Downtown"

- Legal & Accounting Firms
- Financial Institutions
- Professional Offices
- Federal Offices / Post Office
- Medical District
- Bismarck City Administration Office
- Burleigh County Offices
- Bismarck Event Center
- Kirkwood Mall

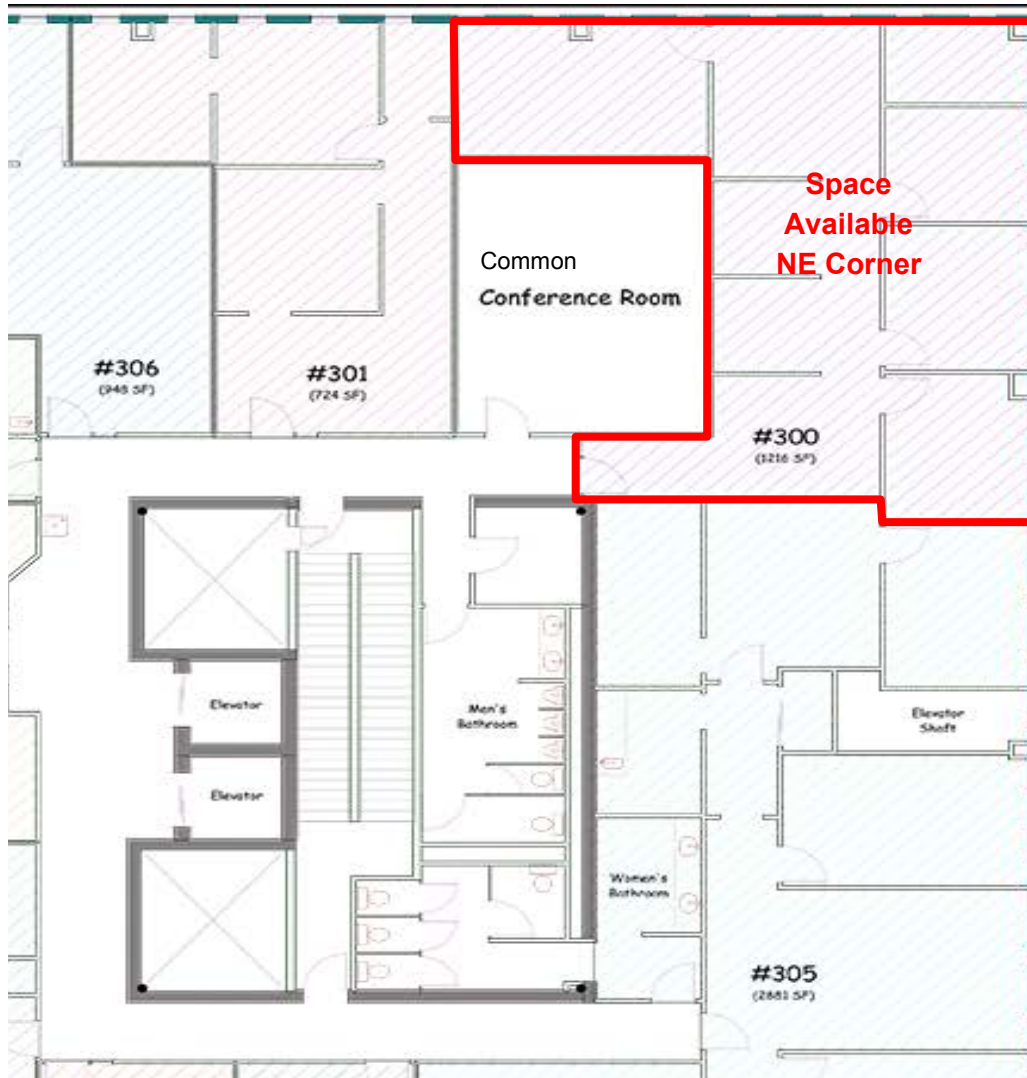


Taylor Daniel, Commercial REALTOR®
701.391.4262
Taylor@DanielCompanies.com

Bill Daniel, CCIM, Broker
701.220.2455
Bill@DanielCompanies.com

DanielCompanies.com

Floor Plan



Exciting Downtown Bismarck

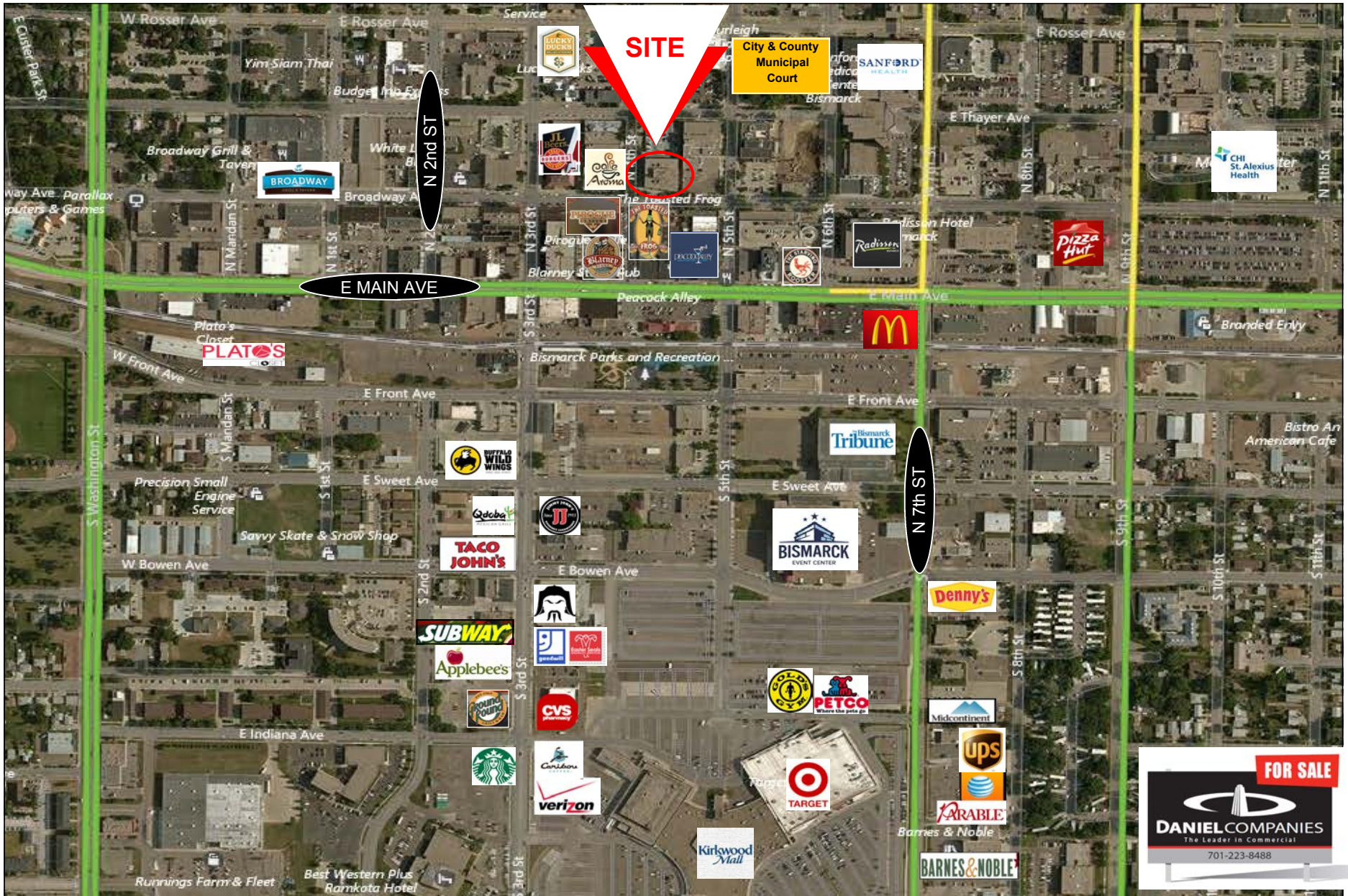
25 Restaurants • 17 Bars • 40 Retail Businesses • 5 Art Galleries



Taylor Daniel, Commercial REALTOR®
701.391.4262
Taylor@DanielCompanies.com

Bill Daniel, CCIM, Broker
701.220.2455
Bill@DanielCompanies.com

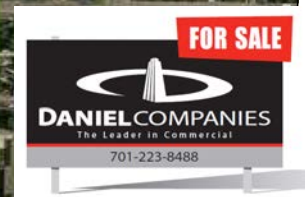
DanielCompanies.com



Taylor Daniel, Commercial REALTOR®
 701.391.4262
Taylor@DanielCompanies.com

Bill Daniel, CCIM, Broker
 701.220.2455
Bill@DanielCompanies.com

DanielCompanies.com





DANIEL COMPANIES

The Leader in Commercial Real Estate

Serving commercial real estate clients with unmatched market knowledge, experience, and a well-deserved reputation for integrity. They know the Bismarck-Mandan commercial real estate market better than anyone. This powerful team delivers powerful results.



Bill Daniel, CCIM, Broker
701.220.2455
Bill@DanielCompanies.com



Kyle Holwagner, CCIM, SIOR
701.400.5373
Kyle@DanielCompanies.com



Taylor Daniel, Commercial REALTOR®
701.391.4262
Taylor@DanielCompanies.com

701.223.8488
304 E ROSSER AVE #200
BISMARCK, ND 58501



ICSC CCIM SIOR
INDIVIDUAL MEMBERS

RETAIL • INVESTMENTS • OFFICE • INDUSTRIAL • SITE SELECTION • LEASING • BUILD TO SUIT • BROKERAGE