

Grand Pacific Center

400 E. Broadway - Suite 300, Bismarck, ND
1,079 SF



Taylor Daniel, Commercial REALTOR
701.391.4262
Taylor@DanielCompanies.com

Bill Daniel, CCIM, Broker
701.220.2455
Bill@DanielCompanies.com

DanielCompanies.com



- Lease Price:
\$18.00 psf with
3% Annual Increase
- Lease Space: 1,079 sf
- Full Service Lease
- Downtown Landmark
Building
- Two Elevators
- Building Conference Room &
Break Room
- Great Location and View
Corner of N 4th St and Broadway Av
- Newly Renovated Exterior &
Interior Lobby
- Available November 1, 2017

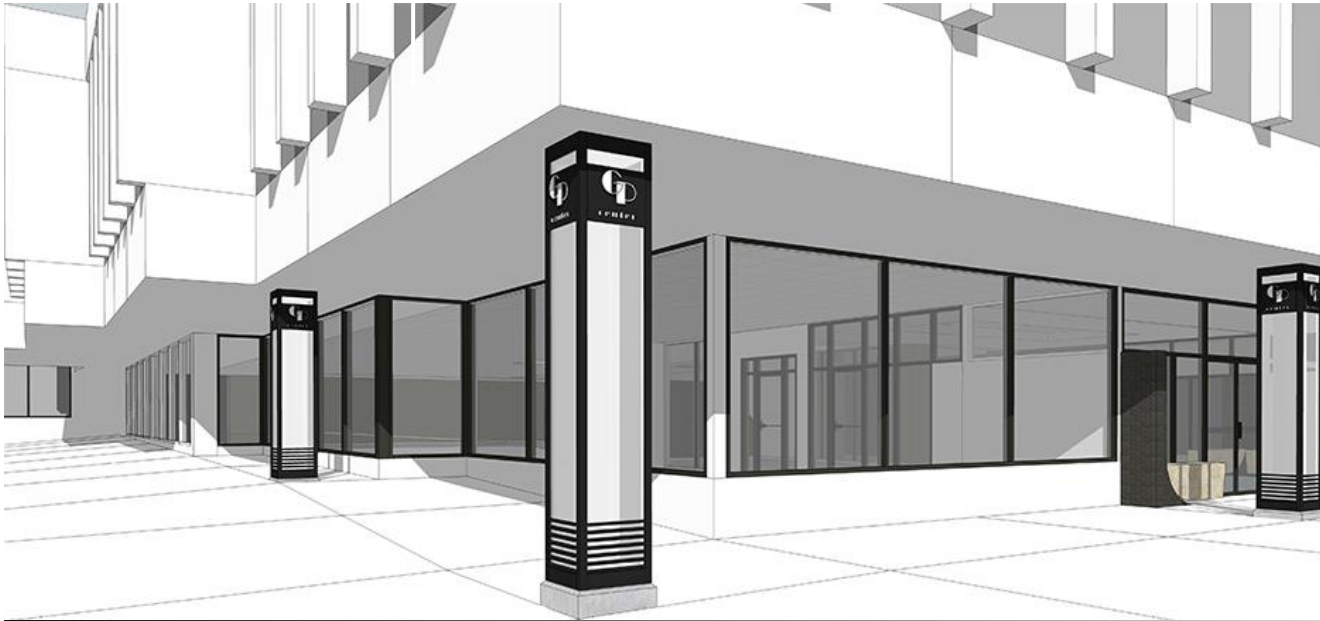
Broker does not guarantee the information describing this property. Interested parties are advised to independently verify the information through personal inspectors or with appropriate professionals.



Taylor Daniel, Commercial REALTOR
701.391.4262
Taylor@DanielCompanies.com

Bill Daniel, CCIM, Broker
701.220.2455
Bill@DanielCompanies.com

DanielCompanies.com



The Grand Pacific Outdoor Plaza anchors the center of downtown Bismarck. The new custom backlit columns provide a great ambiance as you approach the building.



Walk Score

89

400 E. Broadway Ave has a Walk Score of 89 out of 100. Very Walkable – Most errands can be accomplished on foot.

Grand Pacific Center

400 E. Broadway - 6th Floor, Bismarck, ND
14,700 SF - \$18 psf - Full Service

Lease Terms

- Three to five year lease
- Lease price include a \$7 psf operating cost estimate with year end adjustment

Parking

- Parking at city ramps (Tenant pays for parking)

Building Highlights

- Bismarck's most prominent downtown office building
- Completely renovated lobby
- Conference room located on 3rd floor (sign-in sheet for tenant's to reserve)
- Large common break room in lower level
- Work-out room in lower level
- Two elevators

Potential Uses

- Energy Companies
- Professional services
- Government offices
- Accounting firm
- Legal offices
- Medical offices
- Engineering firm

In The "Heart of Downtown"

- Legal & Accounting Firms
- Financial Institutions
- Professional Offices
- Federal Offices / Post Office
- Medical District
- Bismarck City Administration Office
- Burleigh County Offices
- Bismarck Event Center
- Kirkwood Mall

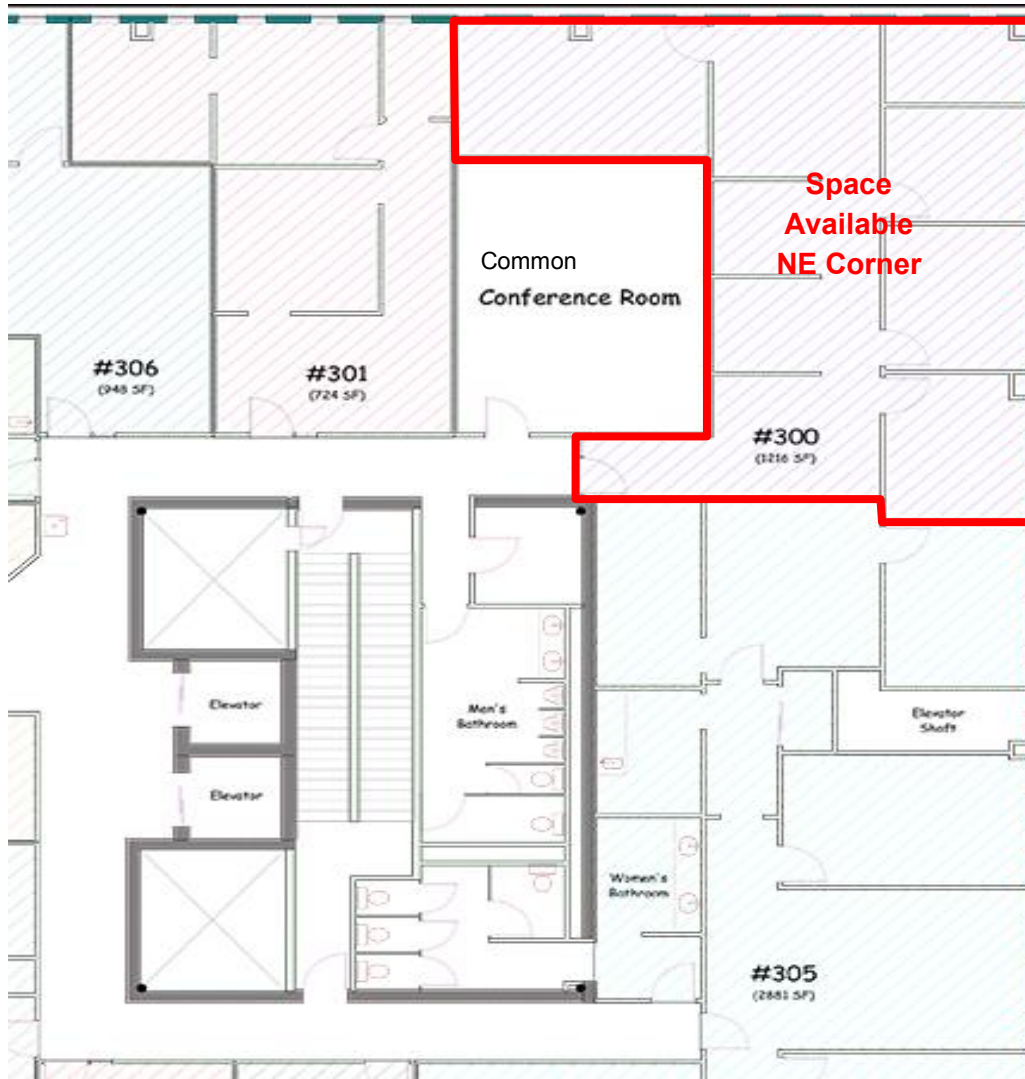


Taylor Daniel, Commercial REALTOR
701.391.4262
Taylor@DanielCompanies.com

Bill Daniel, CCIM, Broker
701.220.2455
Bill@DanielCompanies.com

DanielCompanies.com

Floor Plan



Exciting Downtown Bismarck

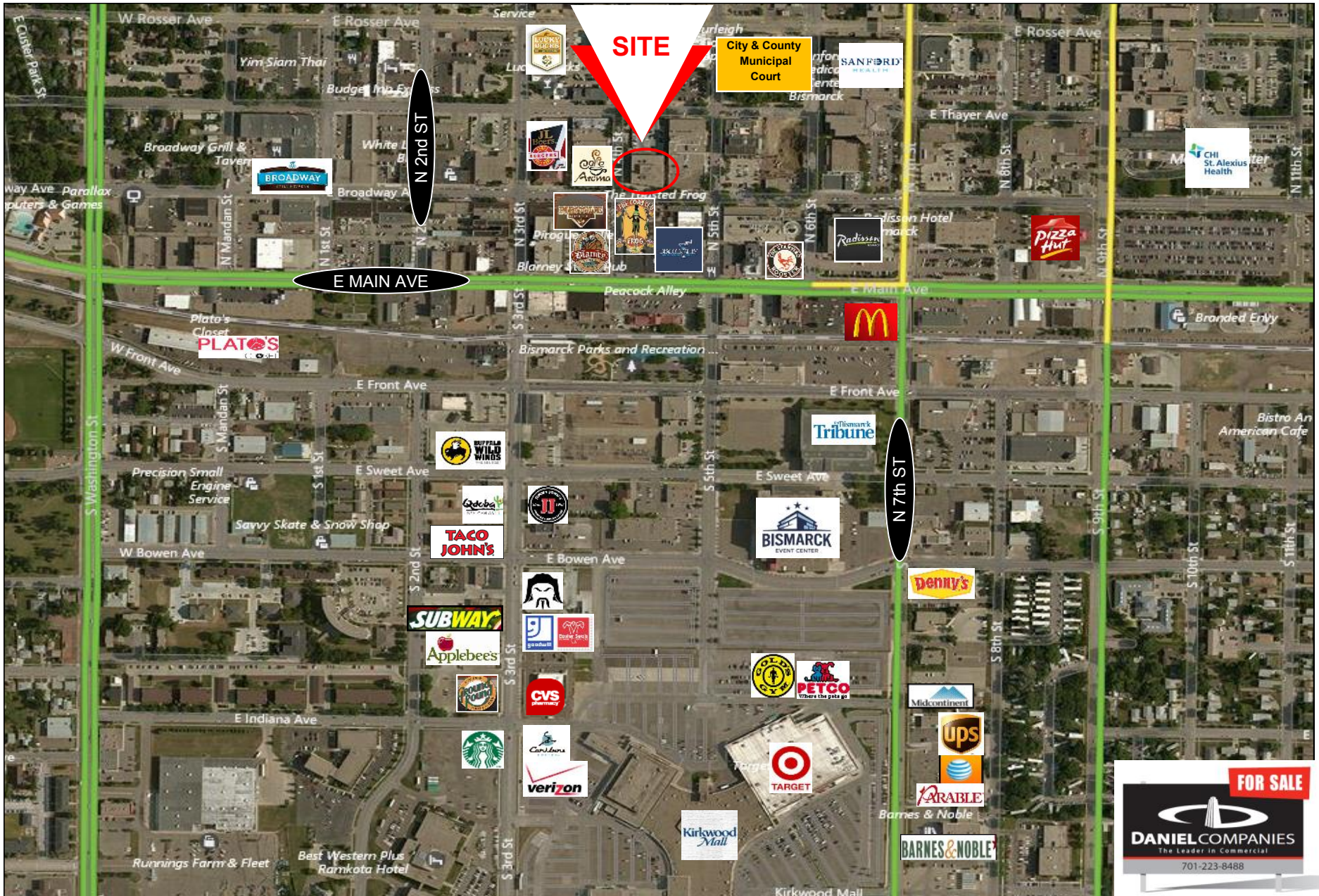
25 Restaurants • 17 Bars • 40 Retail Businesses • 5 Art Galleries



Taylor Daniel, Commercial REALTOR
701.391.4262
Taylor@DanielCompanies.com

Bill Daniel, CCIM, Broker
701.220.2455
Bill@DanielCompanies.com

DanielCompanies.com



Taylor Daniel, Commercial REALTOR
 701.391.4262
Taylor@DanielCompanies.com

Bill Daniel, CCIM, Broker
 701.220.2455
Bill@DanielCompanies.com

DanielCompanies.com



DANIEL COMPANIES

The Leader in Commercial Real Estate

Serving commercial real estate clients with unmatched market knowledge, experience, and a well-deserved reputation for integrity. They know the Bismarck-Mandan commercial real estate market better than anyone. This powerful team delivers powerful results.



Bill Daniel, CCIM, Broker
701.220.2455
Bill@DanielCompanies.com



Kyle Holwagner, CCIM, SIOR
701.400.5373
Kyle@DanielCompanies.com



Taylor Daniel, Commercial REALTOR®
701.391.4262
Taylor@DanielCompanies.com

701.223.8488
304 E ROSSER AVE #200
BISMARCK, ND 58501



RETAIL • INVESTMENTS • OFFICE • INDUSTRIAL • SITE SELECTION • LEASING • BUILD TO SUIT • BROKERAGE