

# 66th Street Industrial Park

2245 & 2330 Fido Dr.

Bismarck, ND

22nd Ave. SE

66th St. SE

Fido Dr.

2210

2250  
2250  
2250  
2250

2245

2330

1900

1901

POPULAR LN

7300

7301

CHE



**Kyle Holwagner, CCIM, SIOR**

701.400.5373

[Kyle@DanielCompanies.com](mailto:Kyle@DanielCompanies.com)

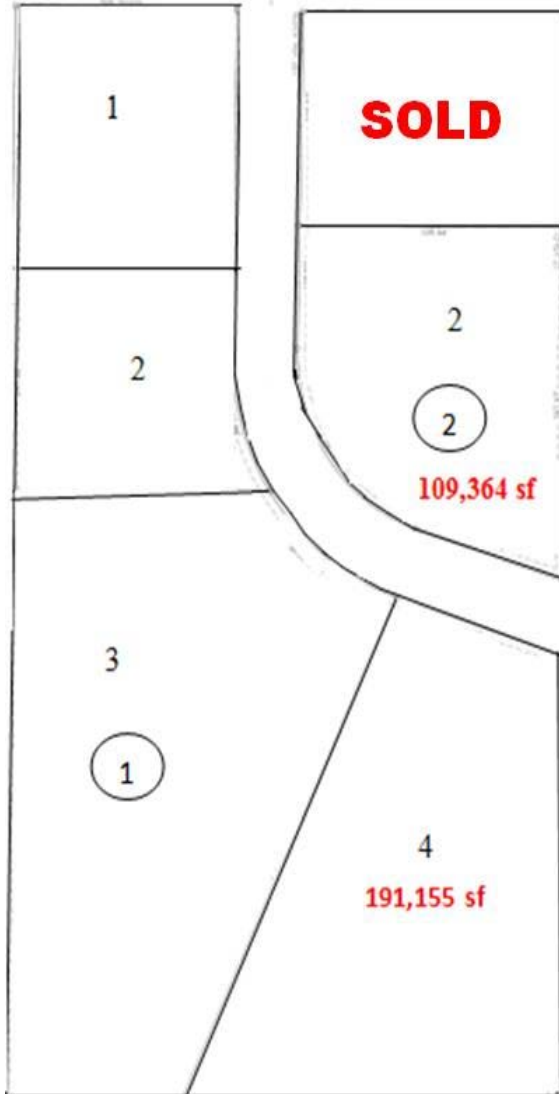
**Kristyn Steckler, Market Coordinator**

701.527.0138

[Kristyn@DanielCompanies.com](mailto:Kristyn@DanielCompanies.com)

[DanielCompanies.com](http://DanielCompanies.com)

22nd Avenue SE



## Area Businesses

- In Lincoln's hottest new development area
- Club Fido
- Lincoln Cenex Convenience Store
- Dakota Community Bank
- St. Alexius Medical Center
- D.J.'s Tavern
- Tumbleweed Bar & Steak House
- Missouri Fence Co
- Mariner Construction
- T & M Electric
- South 40
- Lincoln Fitness
- Overhaul Salon & Tanning
- Z's Storage Rentals

## Potential Uses

- Warehouse
- Distribution
- Manufacturing
- Storage Units
- Business Park
- Industrial Uses
- Shop Space

## For Sale:

- **Lot 2, Block 2 - 109,364 sf**  
2245 Fido Dr.  
Parcel: #39-138-79-01-02-020  
2.51 Acres  
Zoned MA
- **Lot 4, Block 1 - 191,155 sf**  
2330 Fido Dr.  
Parcel: #39-138-79-01-01-040  
4.39 Acres  
Zoned MA
- \$2.99 psf
- Lincoln Industrial Land
- Zoned MA
- Developer Will...Build to Suit

Broker does not guarantee the information describing this property. Interested parties are advised to independently verify the information through personal inspectors or with appropriate professionals.



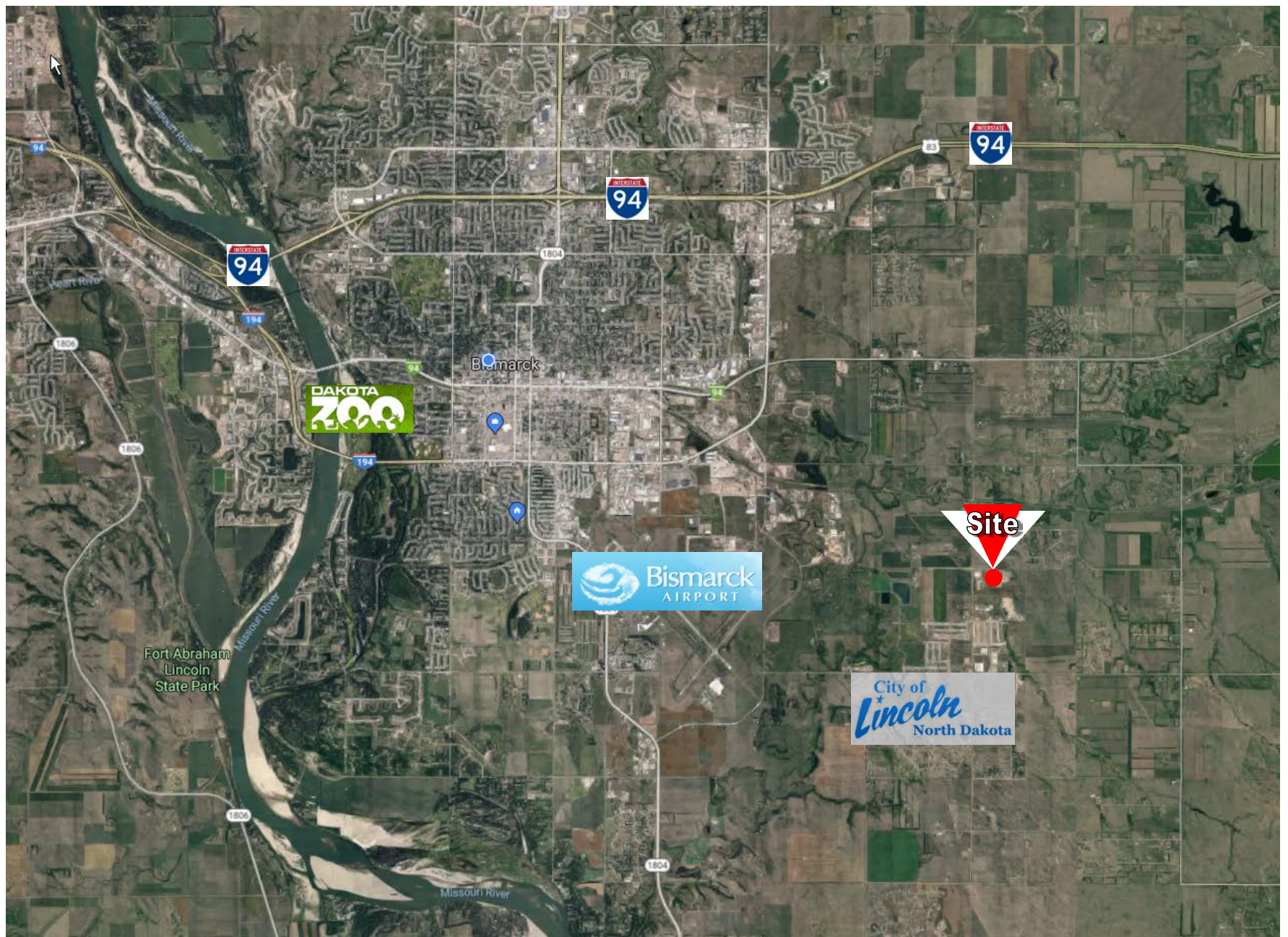
Kyle Holwagner, CCIM, SIOR  
701.400.5373  
[Kyle@DanielCompanies.com](mailto:Kyle@DanielCompanies.com)

Kristyn Steckler, Market Coordinator  
701.527.0138  
[Kristyn@DanielCompanies.com](mailto:Kristyn@DanielCompanies.com)

[DanielCompanies.com](http://DanielCompanies.com)



# Site



Kyle Holwagner, CCIM, SIOR  
701.400.5373  
[Kyle@DanielCompanies.com](mailto:Kyle@DanielCompanies.com)

Kristyn Steckler, Market Coordinator  
701.527.0138  
[Kristyn@DanielCompanies.com](mailto:Kristyn@DanielCompanies.com)

[DanielCompanies.com](http://DanielCompanies.com)



# DANIEL COMPANIES

The Leader in Commercial Real Estate

Serving commercial real estate clients with unmatched market knowledge, experience, and a well-deserved reputation for integrity. They know the Bismarck-Mandan commercial real estate market better than anyone. This powerful team delivers powerful results.



**Bill Daniel, CCIM, Broker**  
701.220.2455  
Bill@DanielCompanies.com



**Kyle Holwagner, CCIM, SIOR**  
701.400.5373  
Kyle@DanielCompanies.com



**Taylor Daniel, Commercial REALTOR®**  
701.391.4262  
Taylor@DanielCompanies.com

701.223.8488  
304 E ROSSER AVE #200  
BISMARCK, ND 58501



ICSC CCIM SIOR  
INDIVIDUAL MEMBERS

RETAIL • INVESTMENTS • OFFICE • INDUSTRIAL • SITE SELECTION • LEASING • BUILD TO SUIT • BROKERAGE