

# 66th Street Industrial Park

2245 & 2330 Fido Dr.  
Bismarck, ND

22nd Ave. SE

66th St. SE

Fido Dr.

POPULAR LN

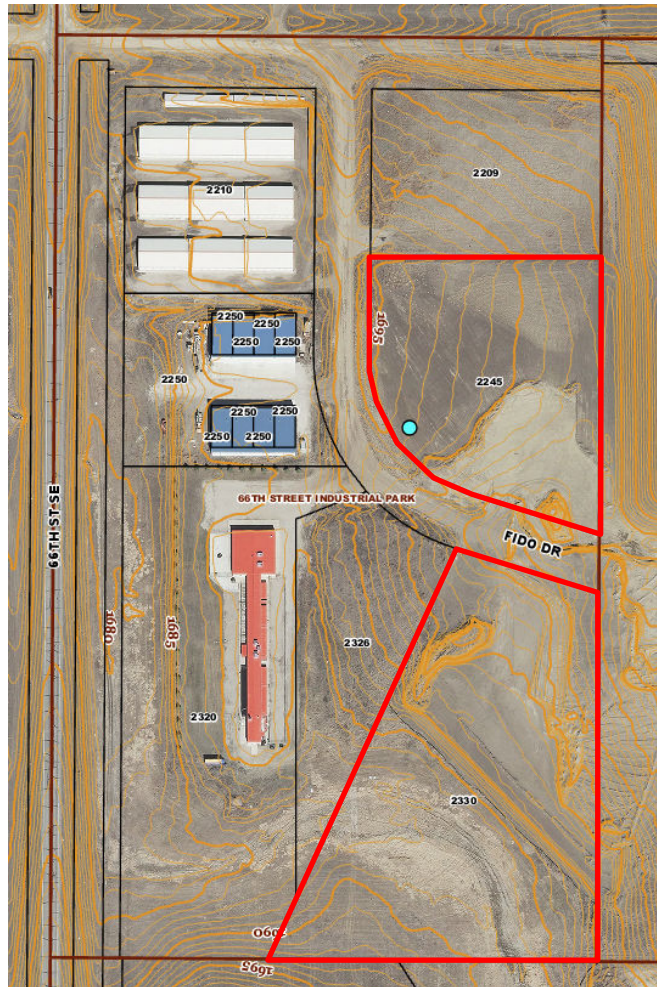
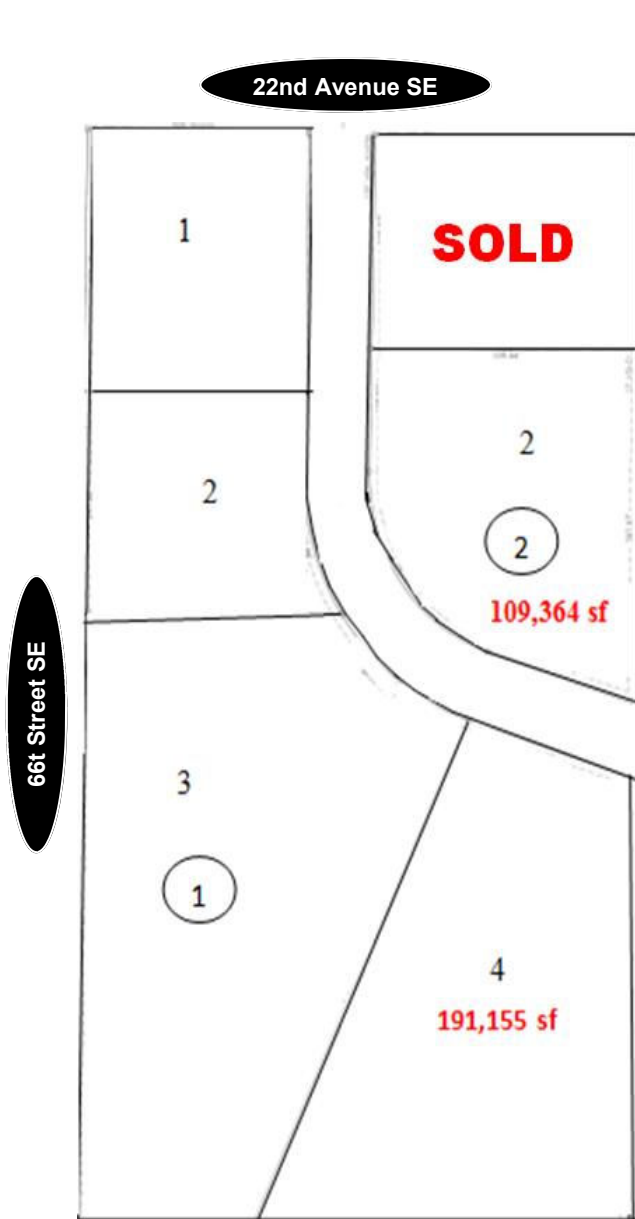
CHE



Kyle Holwagner, CCIM, SIOR  
701.400.5373  
[Kyle@DanielCompanies.com](mailto:Kyle@DanielCompanies.com)

Kristyn Steckler, Senior Client Coordinator  
701.527.0138  
[Kristyn@DanielCompanies.com](mailto:Kristyn@DanielCompanies.com)

[DanielCompanies.com](http://DanielCompanies.com)



**Potential Uses**

- Warehouse
- Distribution
- Manufacturing
- Storage Units
- Business Park
- Industrial Uses
- Shop Space

**For Sale:**

- **Lot 2, Block 2 - 109,364 sf**  
2245 Fido Dr.  
Parcel: #39-138-79-01-02-020  
2.51 Acres  
Zoned MA
- **Lot 4, Block 1 - 191,155 sf**  
2330 Fido Dr.  
Parcel: #39-138-79-01-01-040  
4.39 Acres  
Zoned MA
- \$2.99 psf
- Lincoln Industrial Land
- Zoned MA
- Developer Will...Build to Suit

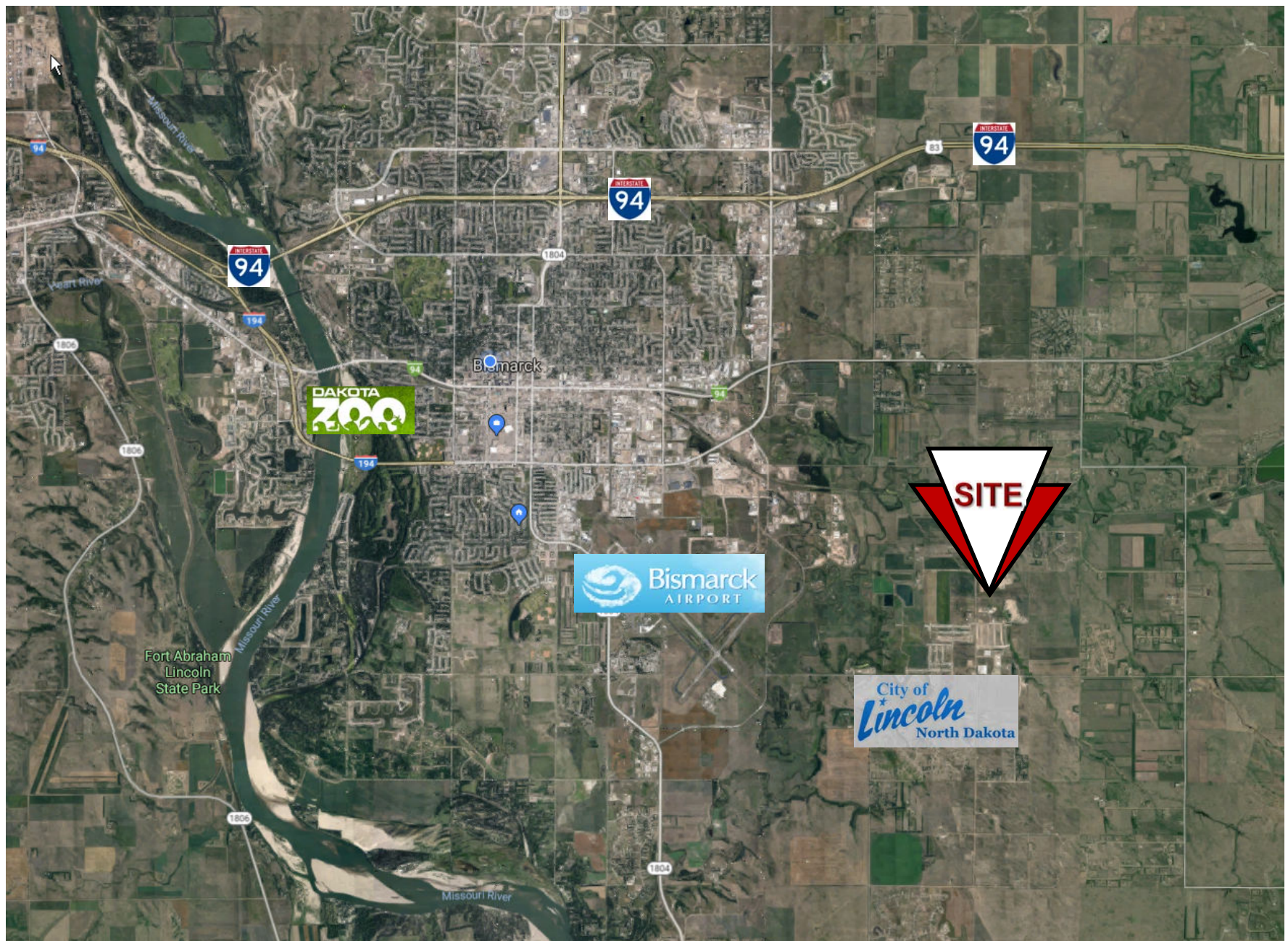
Broker does not guarantee the information describing this property. Interested parties are advised to independently verify the information through personal inspectors or with appropriate professionals.



Kyle Holwagner, CCIM, SIOR  
701.400.5373  
Kyle@DanielCompanies.com

Kristyn Steckler, Senior Client Coordinator  
701.527.0138  
Kristyn@DanielCompanies.com

# Site



Kyle Holwagner, CCIM, SIOR  
701.400.5373  
[Kyle@DanielCompanies.com](mailto:Kyle@DanielCompanies.com)

Kristyn Steckler, Senior Client Coordinator  
701.527.0138  
[Kristyn@DanielCompanies.com](mailto:Kristyn@DanielCompanies.com)

[DanielCompanies.com](http://DanielCompanies.com)



# DANIEL COMPANIES

The Leader in Commercial Real Estate



**Kyle Holwagner**  
CCIM, SIOR

---

701.400.5373  
Kyle@DanielCompanies.com



**Kristyn Steckler**  
REALTOR®

---

701.527.0138  
Kristyn@DanielCompanies.com

Serving commercial real estate clients with unmatched market knowledge, experience and a well-deserved reputation for integrity. They know the Bismarck-Mandan commercial real estate market better than anyone.

Powerful Team. Powerful Process. Powerful Results.