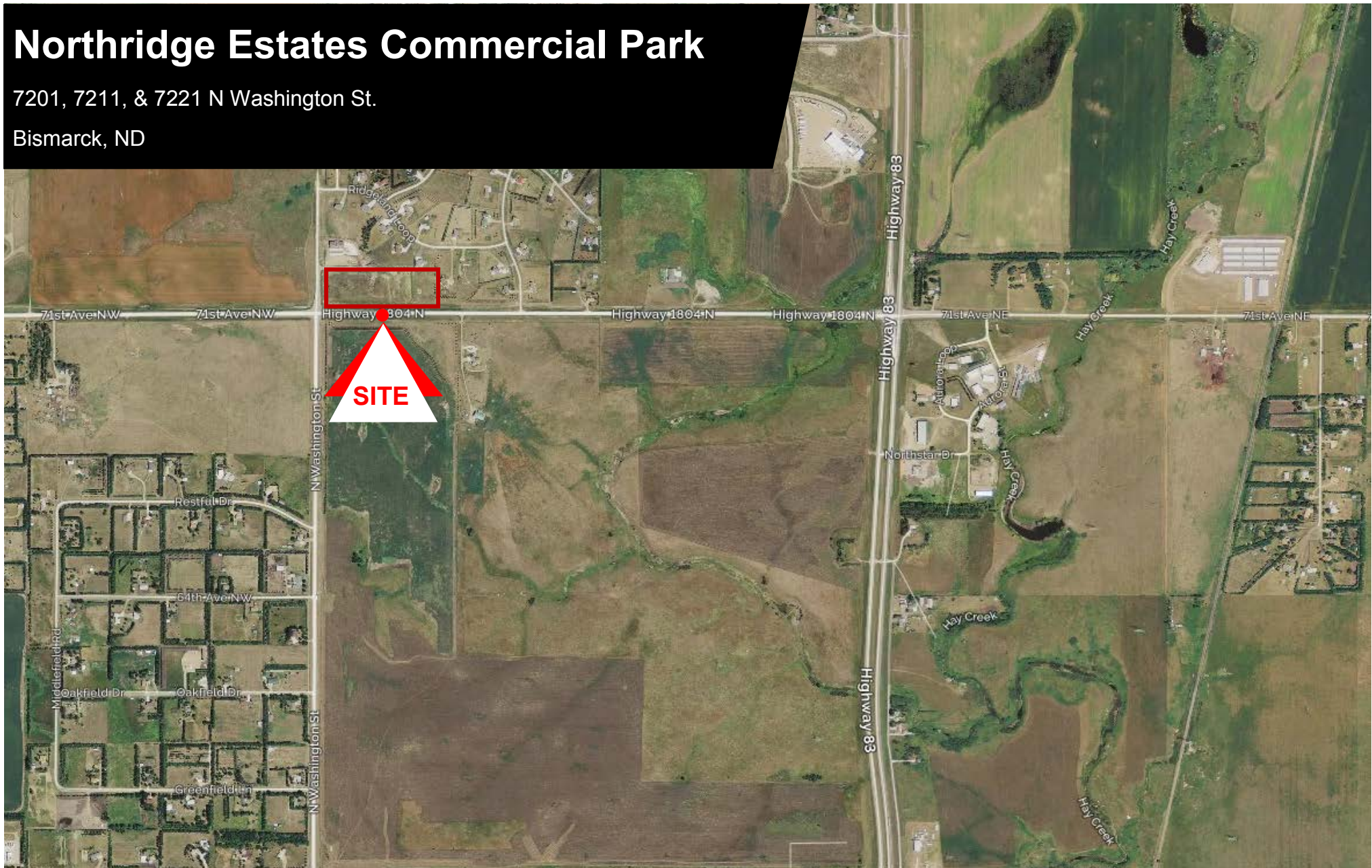


Northridge Estates Commercial Park

7201, 7211, & 7221 N Washington St.

Bismarck, ND



Kyle Holwagner, CCIM, SIOR

701.400.5373

Kyle@DanielCompanies.com

Kristyn Steckler, Market Coordinator

701.527.0138

Kristyn@DanielCompanies.com

DanielCompanies.com

Property Information

	Lot 2	Lot 3	Lot 4
Address	7201 N Washington St.	7211 N Washington St.	7221 N Washington St
Price	\$5.00 psf / \$526,320	\$3.00 psf / \$315,804	\$3.00 psf / \$215,250
Lot Size	105,264 sf / 2.4 Acres	105,268 sf / 2.4 Acres	71,750 sf / 1.6 Acres
Lot Measurement	306.8' x 343.10	(F) 308.57' x (R) 304.94 x (AD)343.36'	208.40' x 343.79' AD
Taxes	Taxes: \$402 (2017)	Taxes: \$402 (2017)	Taxes: \$204.39
Specials:	None	None	None
Parcel ID:	31-139-80-69-01-020	31-139-80-69-01-030	31-139-80-69-01-040

****All Lots Zoned: CA (Commercial)**

Broker does not guarantee the information describing this property. Interested parties are advised to independently verify the information through personal inspectors or with appropriate professionals.



Kyle Holwagner, CCIM, SIOR
 701.400.5373
Kyle@DanielCompanies.com

Kristyn Steckler, Market Coordinator
 701.527.0138
Kristyn@DanielCompanies.com

DanielCompanies.com



Easy Access To

- Washington Street
- State St. / Highway 83 North
- River Road / Highway 1804

Potential Uses

- Retail
- Office
- Service
- Food
- Medical
- Convenience Store

Broker does not guarantee the information describing this property. Interested parties are advised to independently verify the information through personal inspectors or with appropriate professionals.



Kyle Holwagner, CCIM, SIOR
701.400.5373
Kyle@DanielCompanies.com

Kristyn Steckler, Market Coordinator
701.527.0138
Kristyn@DanielCompanies.com

DanielCompanies.com



DANIEL COMPANIES

The Leader in Commercial Real Estate

Serving commercial real estate clients with unmatched market knowledge, experience, and a well-deserved reputation for integrity. They know the Bismarck-Mandan commercial real estate market better than anyone. This powerful team delivers powerful results.



Bill Daniel, CCIM, Broker
701.220.2455
Bill@DanielCompanies.com



Kyle Holwagner, CCIM, SIOR
701.400.5373
Kyle@DanielCompanies.com



Taylor Daniel, Commercial REALTOR®
701.391.4262
Taylor@DanielCompanies.com

701.223.8488
304 E ROSSER AVE #200
BISMARCK, ND 58501



ICSC CCIM SIOR
INDIVIDUAL MEMBERS

RETAIL • INVESTMENTS • OFFICE • INDUSTRIAL • SITE SELECTION • LEASING • BUILD TO SUIT • BROKERAGE