

Retail / Food Space

310 6th Ave SE

Mandan, ND



Kyle Holwagner, CCIM, SIOR

701.400.5373

Kyle@DanielCompanies.com

Kristyn Steckler, Market Coordinator

701.527.0138

Kristyn@DanielCompanies.com

DanielCompanies.com

Area Businesses

- Dan's Supermarket
- Stage Stop Liquors
- Burlington Street Plaza
- St. Alexis Family Medicine
- Fastenal
- Curves
- Corral Sales
- Capital Credit Union
- Cenex
- Captain Jacks



**Lease: \$24 psf -
\$4,000 mo. NNN**

- Space: 2,000 sf
- 1st Generation Space
- End cap closest to the corner of 6th Ave & 3rd St.
- Corner Lot with Traffic Light
- High Visibility
- High Traffic Count
- Great Signage Opportunity

Broker does not guarantee the information describing this property. Interested parties are advised to independently verify the information through personal inspectors or with appropriate professionals.

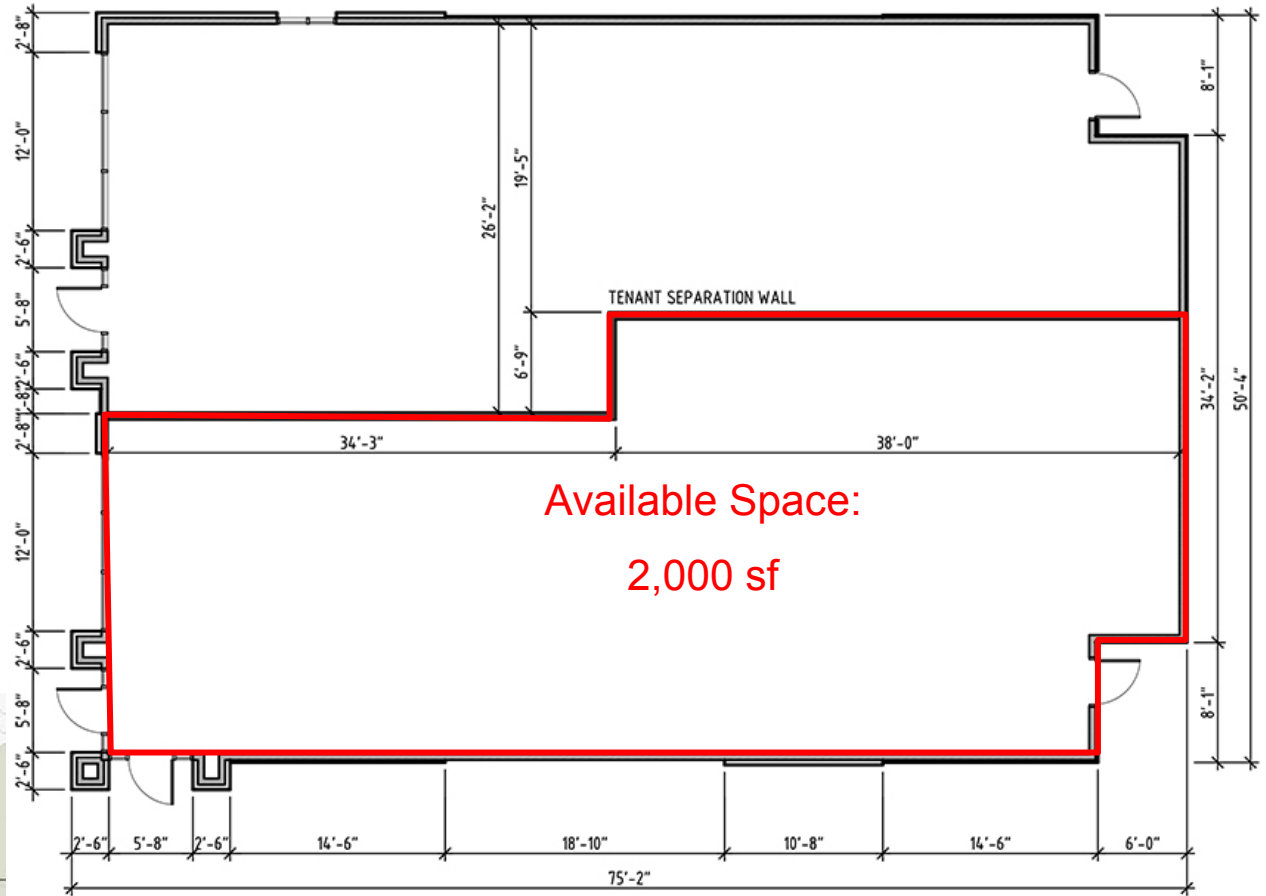


Kyle Holwagner, CCIM, SIOR
701.400.5373
Kyle@DanielCompanies.com

Kristyn Steckler, Market Coordinator
701.527.0138
Kristyn@DanielCompanies.com

DanielCompanies.com

Floor Plan



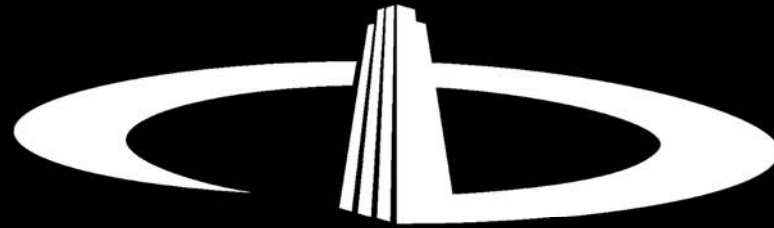
1 BUILDING PERIMETER PLAN
SCALE: 1/8" = 1'-0"

Space will be delivered as a "vanilla" shell.



Kyle Holwagner, CCIM, SIOR
701.400.5373
Kyle@DanielCompanies.com

Kristyn Steckler, Market Coordinator
701.527.0138
Kristyn@DanielCompanies.com



DANIEL COMPANIES

The Leader in Commercial Real Estate

Serving commercial real estate clients with unmatched market knowledge, experience, and a well-deserved reputation for integrity. They know the Bismarck-Mandan commercial real estate market better than anyone. This powerful team delivers powerful results.



Bill Daniel, CCIM, Broker
701.220.2455
Bill@DanielCompanies.com



Kyle Holwagner, CCIM, SIOR
701.400.5373
Kyle@DanielCompanies.com



Taylor Daniel, Commercial REALTOR®
701.391.4262
Taylor@DanielCompanies.com

701.223.8488
304 E ROSSER AVE #200
BISMARCK, ND 58501



ICSC CCIM SIOR
INDIVIDUAL MEMBERS

RETAIL • INVESTMENTS • OFFICE • INDUSTRIAL • SITE SELECTION • LEASING • BUILD TO SUIT • BROKERAGE