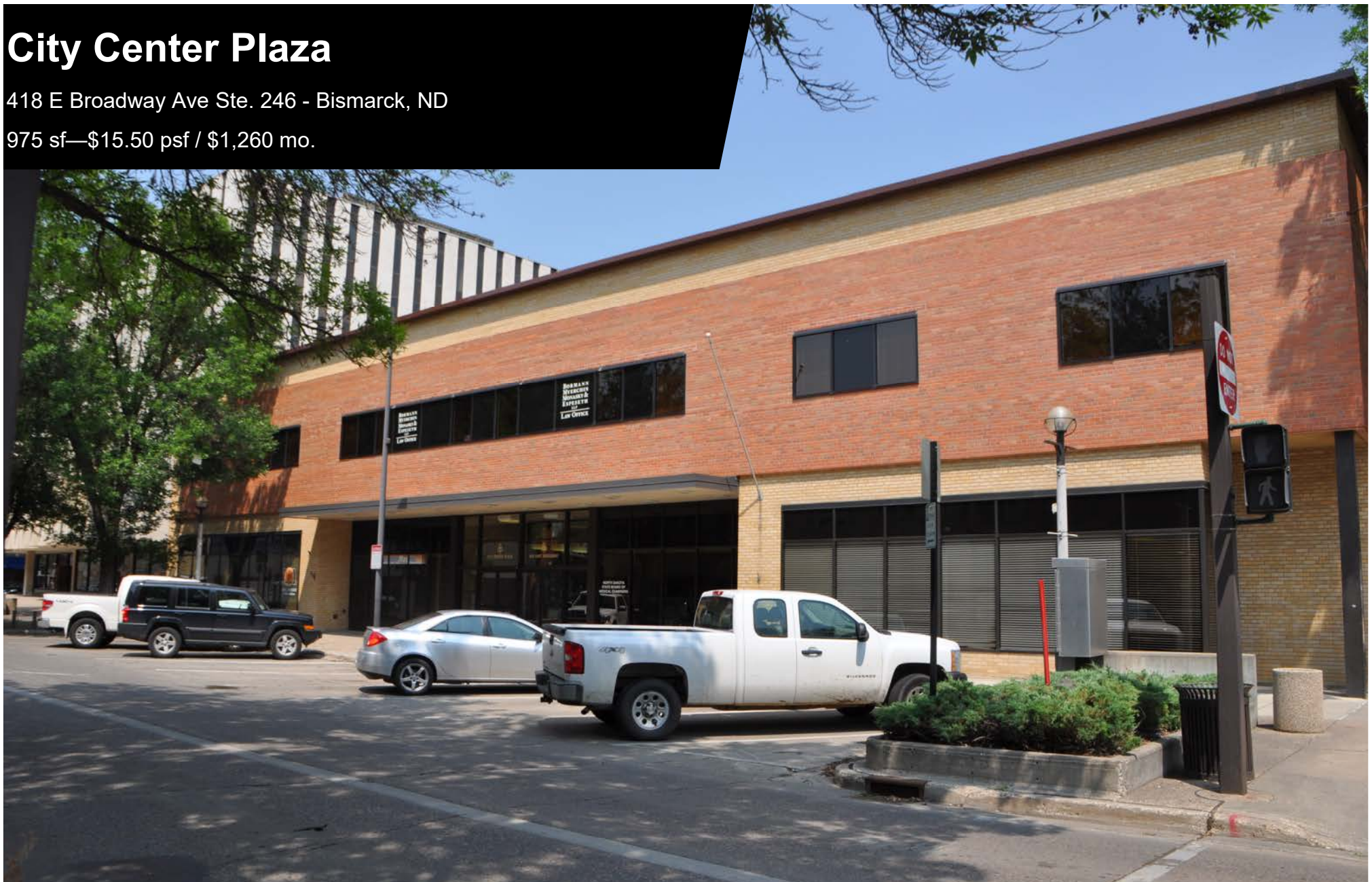


City Center Plaza

418 E Broadway Ave Ste. 246 - Bismarck, ND

975 sf—\$15.50 psf / \$1,260 mo.



Taylor Daniel, Commercial REALTOR®

701.391.4262

Taylor@DanielCompanies.com

DanielCompanies.com

Executive Summary for Lease

Address:	418 E Broadway Ave Ste. 246 - Bismarck, ND
Property Name:	City Center Plaza
Date Available:	Available Now
Lease Term:	3 Year Minimum
Lease Rate:	\$15.50 psf Full Service / \$1,260 mo.
Approximate SF:	975 sf
Parking:	City Ramp Parking
Tenant Responsibilities	Phone and Internet
Landlord Responsibilities	Ground Maintenance, Real Estate Taxes, Building Insurance, Utilities, Snow Removal, Common Area Maintenance
<p>Broker does not guarantee the information describing this property. Interested parties are advised to independently verify the information through personal inspectors or with appropriate professionals.</p>	



Lease: \$15.50 Full Service

- Common Restroom
- Elevator
- Great Corner Location: Corner of N 5th St and E Broadway
- Shared Conference Room
- Close to 3 Downtown Parking Ramps
- Private Offices with Downtown Views
- Walking distance to many downtown restaurants, bars, boutiques, Bismarck Event Center and Kirkwood Mall



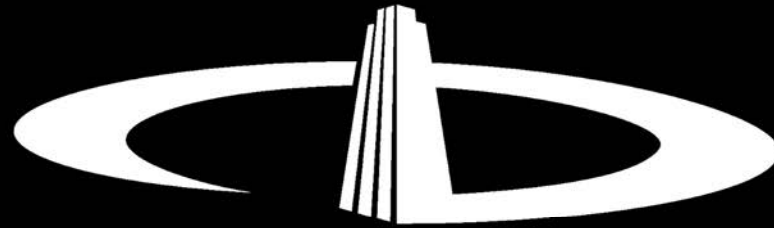
Taylor Daniel, Commercial REALTOR®
 701.391.4262
Taylor@DanielCompanies.com

DanielCompanies.com



Taylor Daniel, Commercial REALTOR®
701.391.4262
Taylor@DanielCompanies.com

DanielCompanies.com



DANIEL COMPANIES

The Leader in Commercial Real Estate

Serving commercial real estate clients with unmatched market knowledge, experience, and a well-deserved reputation for integrity. They know the Bismarck-Mandan commercial real estate market better than anyone. This powerful team delivers powerful results.



Bill Daniel, CCIM, Broker
701.220.2455
Bill@DanielCompanies.com



Kyle Holwagner, CCIM, SIOR
701.400.5373
Kyle@DanielCompanies.com



Taylor Daniel, Commercial REALTOR®
701.391.4262
Taylor@DanielCompanies.com

701.223.8488
304 E ROSSER AVE #200
BISMARCK, ND 58501



ICSC CCIM SIOR
INDIVIDUAL MEMBERS