

# Grand Pacific Center

400 E Broadway Ave, Suite 515 - Bismarck, ND

Lease: \$15.50 psf Full Service



**Taylor Daniel, Commercial REALTOR®**

701.391.4262

[Taylor@DanielCompanies.com](mailto:Taylor@DanielCompanies.com)

**Bill Daniel, CCIM, Broker**

701.220.2455

[Bill@DanielCompanies.com](mailto:Bill@DanielCompanies.com)

[DanielCompanies.com](http://DanielCompanies.com)

## In The “Heart of Downtown”

**Convenient walking distance to many new trendy restaurants, bars and shops**

- Legal Firms
- Financial Institutions
- Professional Offices
- Medical District
- Bismarck City Administration Office
- Burleigh County Offices
- Bismarck Event Center
- Kirkwood Mall

### Lease Terms:

Three year lease minimum

Lease fees include a \$7 psf operating cost estimate with year end adjustment

### Parking

Across the street from City Parking Ramp - \$56 /mo. per space (Tenant pays for parking)

### Building Highlights

- Bismarck's most prominent downtown office building
- Professional and spacious lobby area
- Conference room located on 3<sup>rd</sup> floor (sign-in sheet for tenant's to reserve)
- Large break room in lower level
- Health / work-out room in lower level
- Two elevators

*\*Tenant provides financials,*

## Potential Uses

- Professional services
- Government offices
- Accounting firm
- Legal offices
- Medical offices
- Engineering firm



400 E. Broadway Ave has a Walk Score of 89 out of 100. Very Walkable – Most errands can be accomplished on foot.

## Lease Price: \$15.50 psf Full Service

- 3% Annual Increase
- Lease Space: 600 sf - 5th Floor
- 3 Year Lease Minimum
- 2 Private Offices w/ Reception Area
- Downtown Landmark Building
- Two Elevators
- Building Conference Room & Break Room
- Great Location:  
Corner of N 4th St and Broadway Ave

Broker does not guarantee the information describing this property. Interested parties are advised to independently verify the information through personal inspectors or with

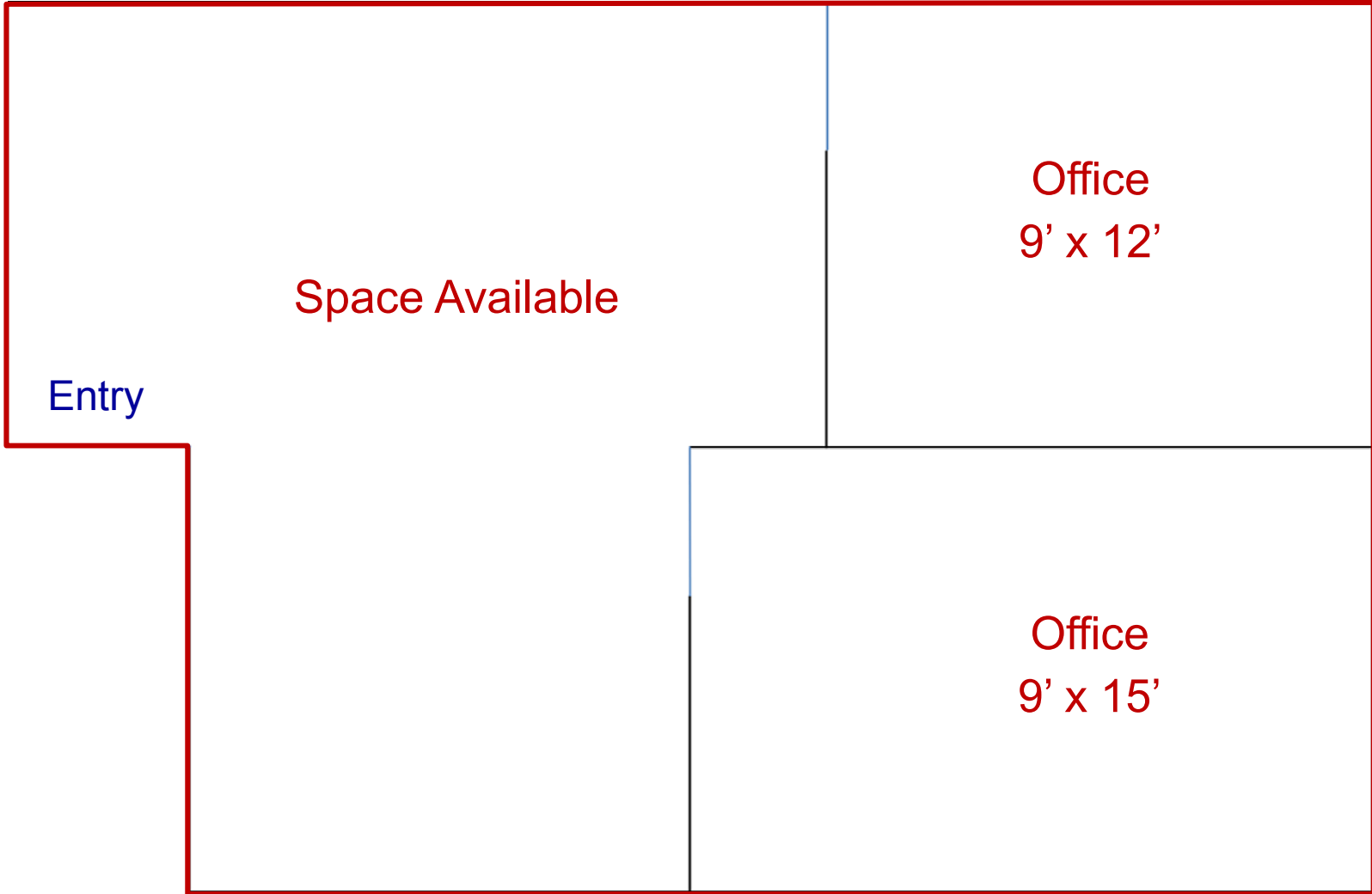


**Taylor Daniel, Commercial REALTOR®**  
701.391.4262  
[Taylor@DanielCompanies.com](mailto:Taylor@DanielCompanies.com)

**Bill Daniel, CCIM, Broker**  
701.220.2455  
[Bill@DanielCompanies.com](mailto:Bill@DanielCompanies.com)

[DanielCompanies.com](http://DanielCompanies.com)

# Floor Plan



**Taylor Daniel, Commercial REALTOR®**  
701.391.4262  
[Taylor@DanielCompanies.com](mailto:Taylor@DanielCompanies.com)

**Bill Daniel, CCIM, Broker**  
701.220.2455  
[Bill@DanielCompanies.com](mailto:Bill@DanielCompanies.com)

[DanielCompanies.com](http://DanielCompanies.com)



**Taylor Daniel, Commercial REALTOR®**  
701.391.4262  
[Taylor@DanielCompanies.com](mailto:Taylor@DanielCompanies.com)

**Bill Daniel, CCIM, Broker**  
701.220.2455  
[Bill@DanielCompanies.com](mailto:Bill@DanielCompanies.com)

[DanielCompanies.com](http://DanielCompanies.com)



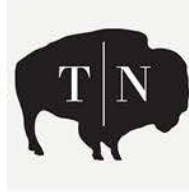
Building Elevator, Escalator & Lobby



Building Tenant's Conference & Break Room



# Join Exciting Downtown Bismarck!



**DANIEL COMPANIES**  
The Leader in Commercial Real Estate

Taylor Daniel, Commercial REALTOR®

701.391.4262

[Taylor@DanielCompanies.com](mailto:Taylor@DanielCompanies.com)

Bill Daniel, CCIM, Broker

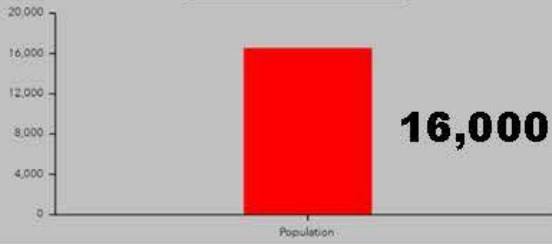
701.220.2455

[Bill@DanielCompanies.com](mailto:Bill@DanielCompanies.com)

[DanielCompanies.com](http://DanielCompanies.com)

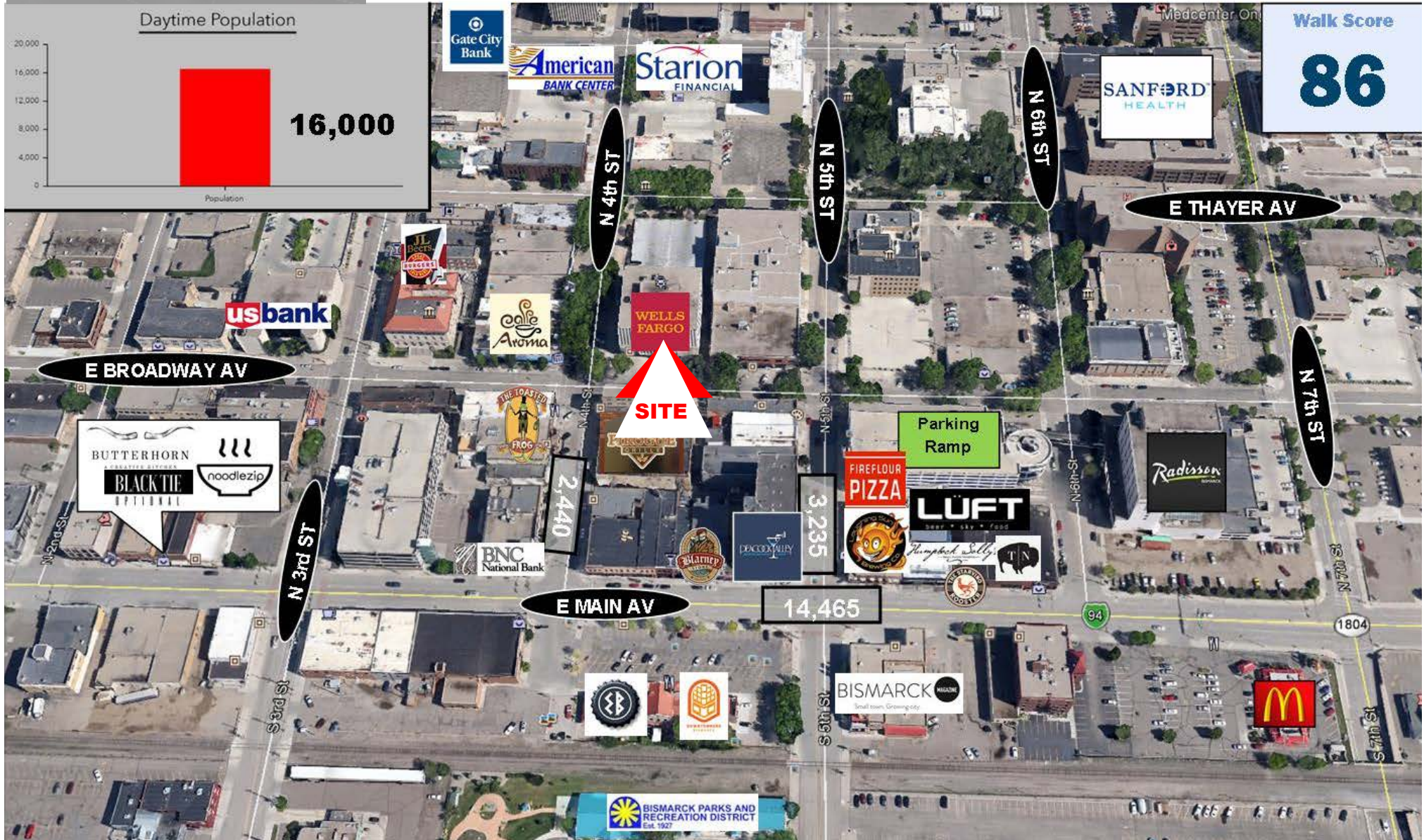
# Downtown Bismarck

Daytime Population



Walk Score

**86**



Taylor Daniel, Commercial REALTOR®  
701.391.4262  
Taylor@DanielCompanies.com

Bill Daniel, CCIM, Broker  
701.220.2455  
Bill@DanielCompanies.com

[DanielCompanies.com](http://DanielCompanies.com)



# DANIEL COMPANIES

The Leader in Commercial Real Estate

Serving commercial real estate clients with unmatched market knowledge, experience, and a well-deserved reputation for integrity. They know the Bismarck-Mandan commercial real estate market better than anyone. This powerful team delivers powerful results.



**Bill Daniel, CCIM, Broker**  
701.220.2455  
Bill@DanielCompanies.com



**Kyle Holwagner, CCIM, SIOR**  
701.400.5373  
Kyle@DanielCompanies.com



**Taylor Daniel, Commercial REALTOR®**  
701.391.4262  
Taylor@DanielCompanies.com

701.223.8488  
304 E ROSSER AVE #200  
BISMARCK, ND 58501



ICSC CCIM SIOR  
INDIVIDUAL MEMBERS

RETAIL • INVESTMENTS • OFFICE • INDUSTRIAL • SITE SELECTION • LEASING • BUILD TO SUIT • BROKERAGE