

# Great Downtown Office Space 400 E Broadway Ave, Suite 515 - Bismarck, ND

Lease: \$18.00 psf Full Service



**Taylor Daniel, Commercial REALTOR**  
701.391.4262  
[Taylor@DanielCompanies.com](mailto:Taylor@DanielCompanies.com)

**Bill Daniel, CCIM, Broker**  
701.220.2455  
[Bill@DanielCompanies.com](mailto:Bill@DanielCompanies.com)

[DanielCompanies.com](http://DanielCompanies.com)

## In The “Heart of Downtown”

**Convenient walking distance to many new trendy restaurants, bars and shops**

- Legal Firms
- Financial Institutions
- Professional Offices
- Medical District
- Bismarck City Administration Office
- Burleigh County Offices
- Bismarck Event Center
- Kirkwood Mall

### Lease Terms:

Three year lease minimum

Lease fees include a \$7 psf operating cost estimate with year end adjustment

### Parking

Across the street from City Parking Ramp - \$56 /mo. per space (Tenant pays for parking)

### Building Highlights

Bismarck’s most prominent downtown office building

Professional and spacious lobby area

Conference room located on 3<sup>rd</sup> floor (sign-in sheet for tenant’s to reserve)

Large break room in lower level

Health / work-out room in lower level

Two elevators

*\*Tenant provides financials, credit review required*

## Potential Uses

- Professional services
- Government offices
- Accounting firm
- Legal offices
- Medical offices
- Engineering firm



400 E. Broadway Ave has a Walk Score of 89 out of 100. Very Walkable – Most errands can be accomplished on foot.

## Lease Price: \$18.00 psf Full Service

- 3% Annual Increase
- Lease Space: 600 sf - 5th Floor
- 3 Year Lease Minimum
- 2 Private Offices w/ Reception Area
- Downtown Landmark Building
- Two Elevators
- Building Conference Room & Break Room
- Great Location:  
Corner of N 4th St and Broadway Ave

Broker does not guarantee the information describing this property. Interested parties are advised to independently verify the information through personal inspectors or with appropriate professionals.



Taylor Daniel, Commercial REALTOR

701.391.4262

[Taylor@DanielCompanies.com](mailto:Taylor@DanielCompanies.com)

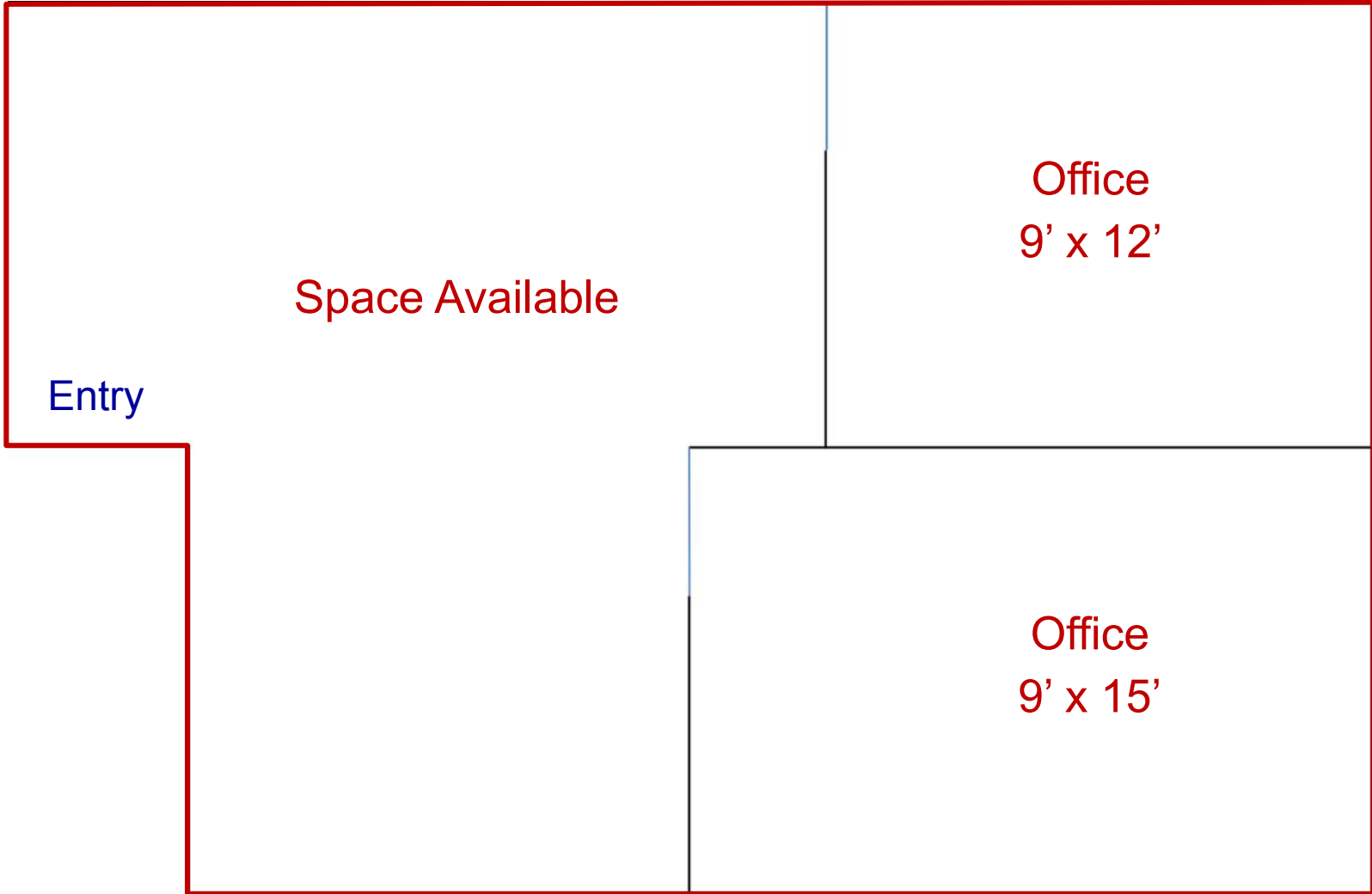
Bill Daniel, CCIM, Broker

701.220.2455

[Bill@DanielCompanies.com](mailto:Bill@DanielCompanies.com)

[DanielCompanies.com](http://DanielCompanies.com)

# Floor Plan





Taylor Daniel, Commercial REALTOR  
701.391.4262  
[Taylor@DanielCompanies.com](mailto:Taylor@DanielCompanies.com)

Bill Daniel, CCIM, Broker  
701.220.2455  
[Bill@DanielCompanies.com](mailto:Bill@DanielCompanies.com)

[DanielCompanies.com](http://DanielCompanies.com)



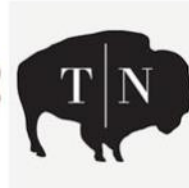
Building Elevator, Escalator & Lobby



Building Tenant's Conference & Break Room



# Join Exciting Downtown Bismarck!



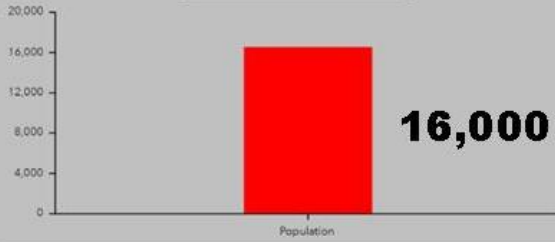
Taylor Daniel, Commercial REALTOR  
 701.391.4262  
[Taylor@DanielCompanies.com](mailto:Taylor@DanielCompanies.com)

Bill Daniel, CCIM, Broker  
 701.220.2455  
[Bill@DanielCompanies.com](mailto:Bill@DanielCompanies.com)

[DanielCompanies.com](http://DanielCompanies.com)

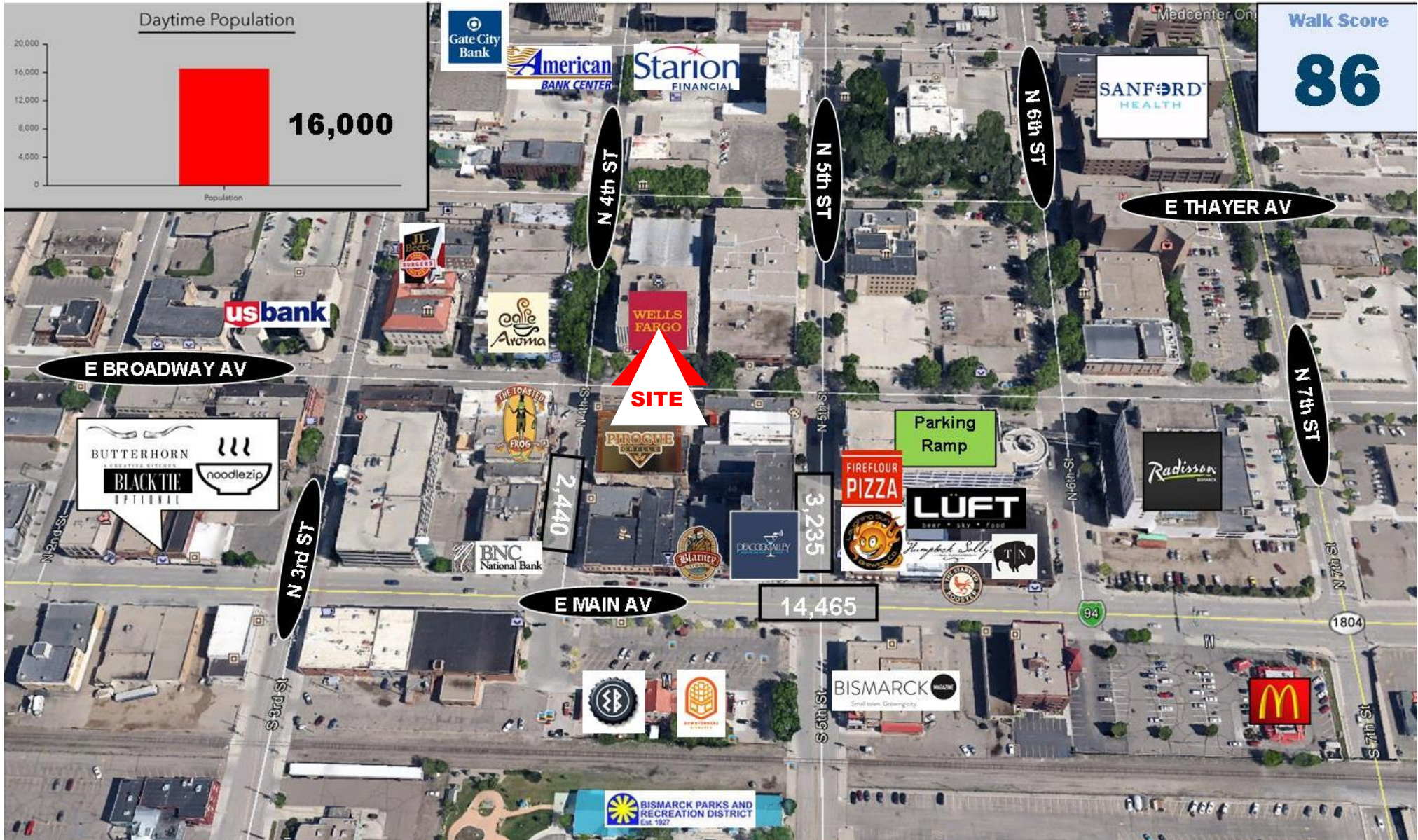
# Downtown Bismarck

Daytime Population



Walk Score

**86**



Taylor Daniel, Commercial REALTOR  
 701.391.4262  
 Taylor@DanielCompanies.com

Bill Daniel, CCIM, Broker  
 701.220.2455  
 Bill@DanielCompanies.com

[DanielCompanies.com](http://DanielCompanies.com)



# DANIEL COMPANIES

The Leader in Commercial Real Estate

Serving commercial real estate clients with unmatched market knowledge, experience, and a well-deserved reputation for integrity. They know the Bismarck-Mandan commercial real estate market better than anyone. This powerful team delivers powerful results.



**Bill Daniel, CCIM, Broker**  
701.220.2455  
Bill@DanielCompanies.com



**Kyle Holwagner, CCIM, SIOR**  
701.400.5373  
Kyle@DanielCompanies.com



**Taylor Daniel, Commercial REALTOR®**  
701.391.4262  
Taylor@DanielCompanies.com

701.223.8488  
304 E ROSSER AVE #200  
BISMARCK, ND 58501



ICSC CCIM SIOR  
INDIVIDUAL MEMBERS

RETAIL • INVESTMENTS • OFFICE • INDUSTRIAL • SITE SELECTION • LEASING • BUILD TO SUIT • BROKERAGE