

# Office Suites

301 2st St. NE Suite 303 & 305

Mandan, ND



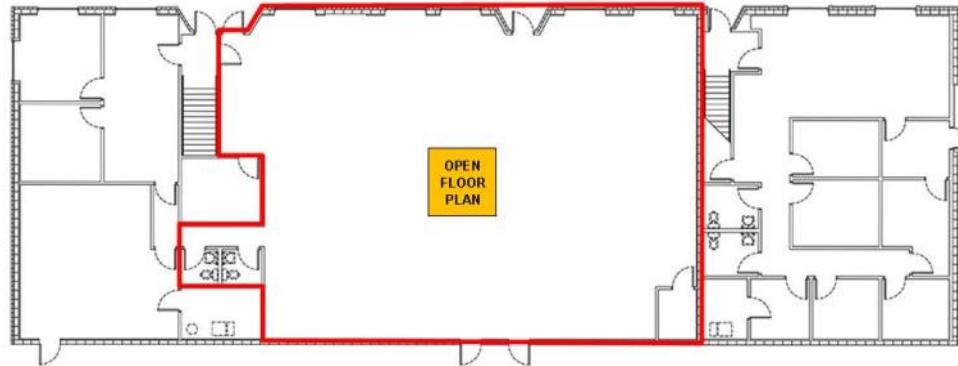
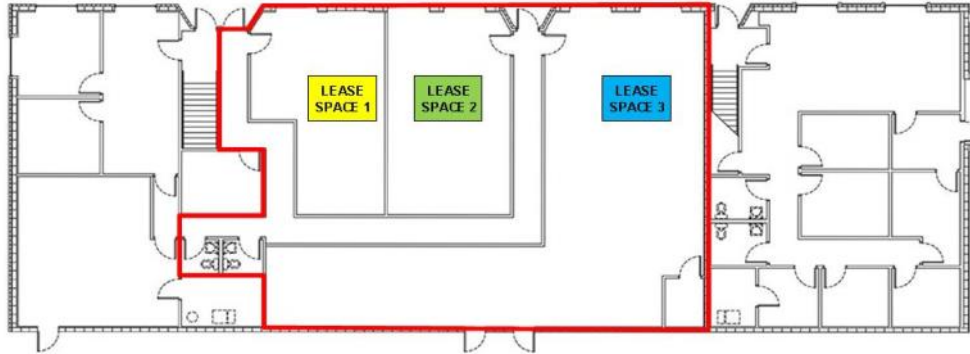
**Kyle Holwagner, CCIM, SIOR**  
701.400.5373  
[Kyle@DanielCompanies.com](mailto:Kyle@DanielCompanies.com)

**Kristyn Steckler, Market Coordinator**  
701.527.0138  
[Kristyn@DanielCompanies.com](mailto:Kristyn@DanielCompanies.com)

[DanielCompanies.com](http://DanielCompanies.com)

## Area Businesses

- Strawberry Restaurant & Bar
- Butcher Block Meats
- Family Dollar
- O'Reilly Auto Parts
- Papa Murphy's
- Pizza Ranch
- M & H
- Verizon Wireless
- Hardee's
- Subway
- Wenck & Associates Gas



**Lease: 3,500 sf -**

**May Be Subdivided**

- Rate: \$10.50 psf
- Full Services less Janitorial
- Open Floor Plan - Main Floor
- Easy Access
- North Facing Windows
- Good Signage Available
- Ample Parking
- One Block off Main St.

### Potential Uses:

- Professional Services
- Medical Office
- Legal Office
- Accounting Firm
- Government Offices
- Engineering Firm - to be approved
- Flex Retail
- Health / Fitness
- Salon / Tanning
- Training Center

Broker does not guarantee the information describing this property. Interested parties are advised to independently verify the information through personal inspectors or with appropriate professionals.

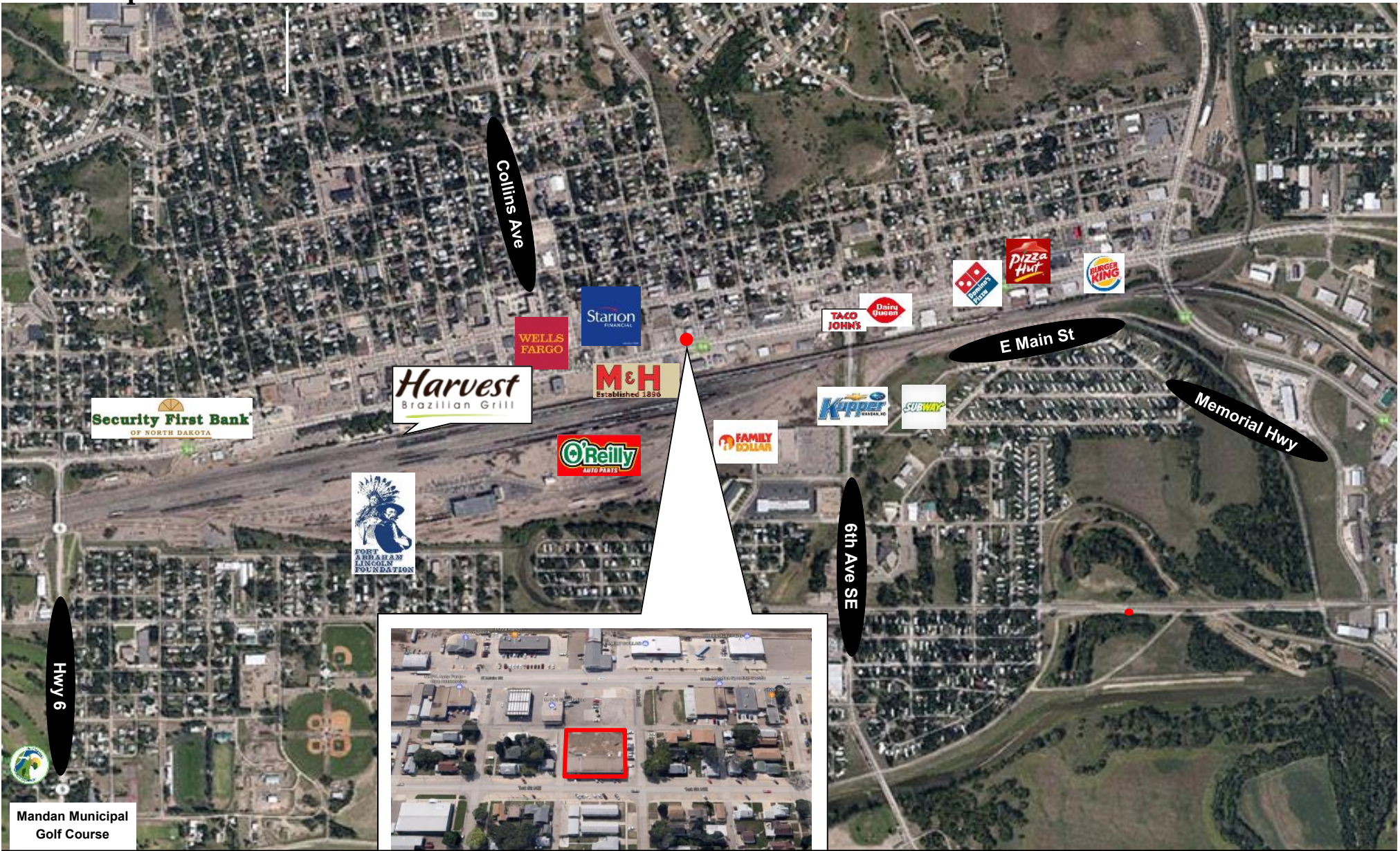


**Kyle Holwagner, CCIM, SIOR**  
701.400.5373  
[Kyle@DanielCompanies.com](mailto:Kyle@DanielCompanies.com)

**Kristyn Steckler, Market Coordinator**  
701.527.0138  
[Kristyn@DanielCompanies.com](mailto:Kristyn@DanielCompanies.com)

[DanielCompanies.com](http://DanielCompanies.com)

# Area Map



Mandan Municipal  
Golf Course



Kyle Holwagner, CCIM, SIOR  
701.400.5373  
[Kyle@DanielCompanies.com](mailto:Kyle@DanielCompanies.com)

Kristyn Steckler, Market Coordinator  
701.527.0138  
[Kristyn@DanielCompanies.com](mailto:Kristyn@DanielCompanies.com)

[DanielCompanies.com](http://DanielCompanies.com)



# DANIEL COMPANIES

The Leader in Commercial Real Estate

Serving commercial real estate clients with unmatched market knowledge, experience, and a well-deserved reputation for integrity. They know the Bismarck-Mandan commercial real estate market better than anyone. This powerful team delivers powerful results.



**Bill Daniel, CCIM, Broker**  
701.220.2455  
Bill@DanielCompanies.com



**Kyle Holwagner, CCIM, SIOR**  
701.400.5373  
Kyle@DanielCompanies.com



**Taylor Daniel, Commercial REALTOR®**  
701.391.4262  
Taylor@DanielCompanies.com

701.223.8488  
304 E ROSSER AVE #200  
BISMARCK, ND 58501



ICSC CCIM SIOR  
INDIVIDUAL MEMBERS

RETAIL • INVESTMENTS • OFFICE • INDUSTRIAL • SITE SELECTION • LEASING • BUILD TO SUIT • BROKERAGE