

Gateway Professional Center

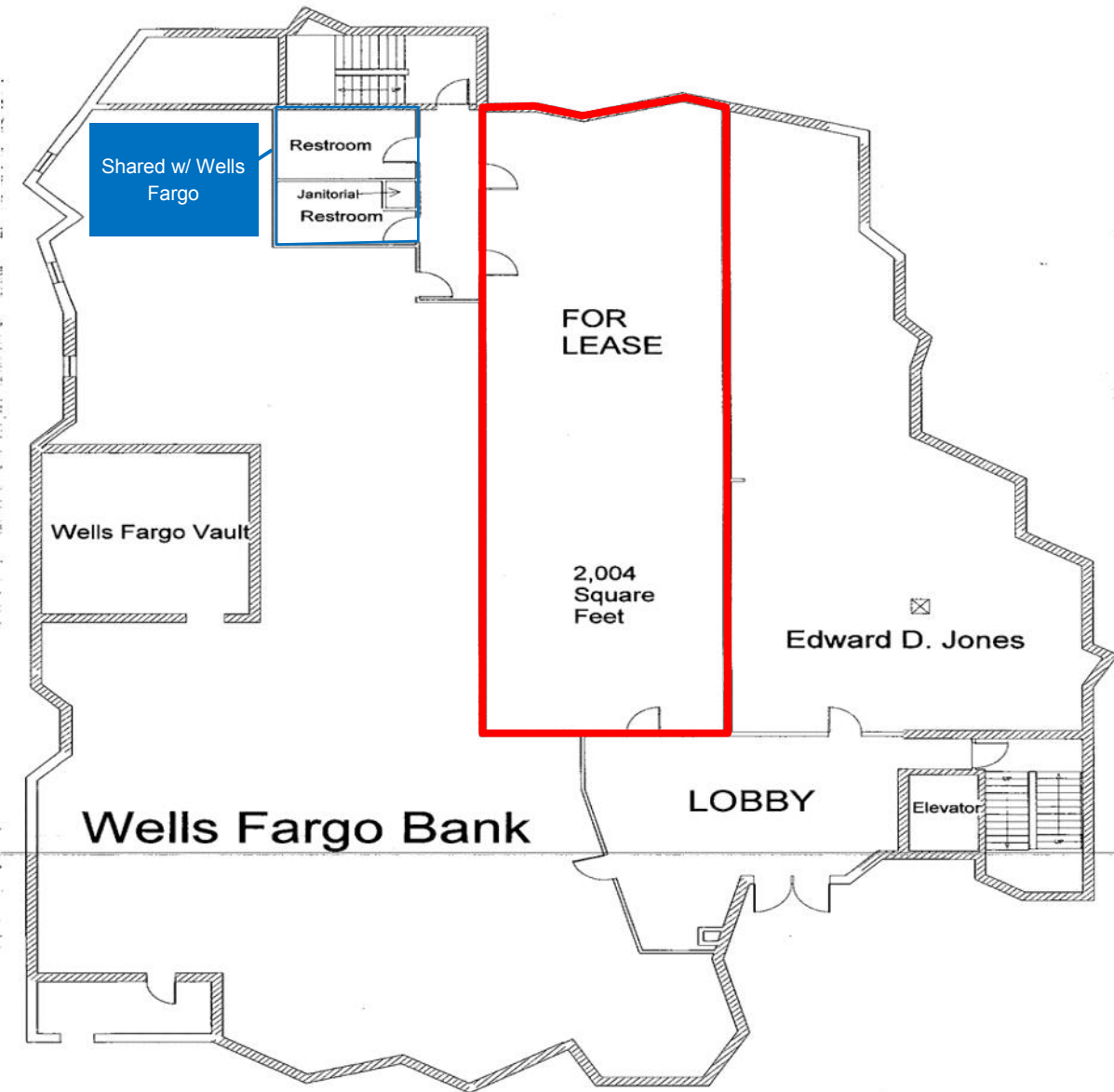
1050 E Interstate Ave. Suite 122 – Bismarck, ND
2,004 sf Main Floor @ \$16.00 psf = \$2,672/mo.



Taylor Daniel, Commercial REALTOR
701.391.4262
Taylor@DanielCompanies.com

Bill Daniel, CCIM, Broker
701.220.2455
Bill@DanielCompanies.com

DanielCompanies.com



**Lease Price: \$16 psf = \$2,672/mo. +
Janitorial and Annual Real Estate
Tax Escalator**

- 2,004 sf Main Floor
- High Foot traffic exposure 500+ people per day
- Pylon Signage
- Great North Bismarck Location
- New Renovated Lobby Entrance
- Ample Parking

Property Information:

- Easy access to many restaurants and shopping
- Easy access of I-94 & State Street.
- Includes 1/2 restroom space shared w/ Wells Fargo
- **Owner will provide new floor covering and sound proofing**

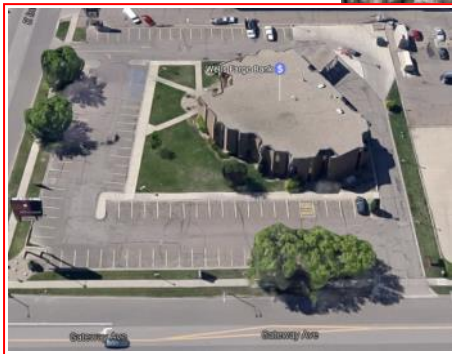
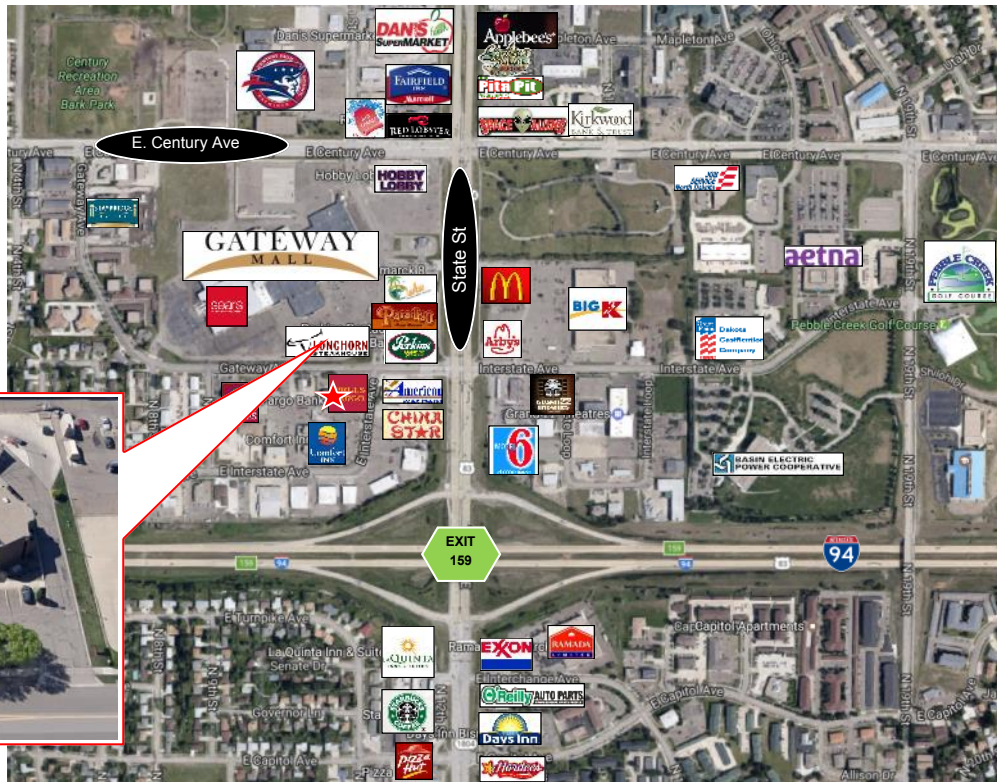
Potential Uses:

- Professional Services
- Government Offices
- Accounting Firm
- Legal Offices
- Medical Offices (except Chiropractic)
- Engineering Firm
- No 'Finance' type Tenant Use



Taylor Daniel, Commercial REALTOR
701.391.4262
Taylor@DanielCompanies.com

Bill Daniel, CCIM, Broker
701.220.2455
Bill@DanielCompanies.com



Broker does not guarantee the information describing this property. Interested parties are advised to independently verify the information through personal inspectors or with appropriate professionals.



Taylor Daniel, Commercial REALTOR
 701.391.4262
Taylor@DanielCompanies.com

Bill Daniel, CCIM, Broker
 701.220.2455
Bill@DanielCompanies.com

DanielCompanies.com



DANIEL COMPANIES

The Leader in Commercial Real Estate

Serving commercial real estate clients with unmatched market knowledge, experience, and a well-deserved reputation for integrity. They know the Bismarck-Mandan commercial real estate market better than anyone. This powerful team delivers powerful results.



Bill Daniel, CCIM, Broker
701.220.2455
Bill@DanielCompanies.com



Kyle Holwagner, CCIM, SIOR
701.400.5373
Kyle@DanielCompanies.com



Taylor Daniel, Commercial REALTOR®
701.391.4262
Taylor@DanielCompanies.com

701.223.8488
304 E ROSSER AVE #200
BISMARCK, ND 58501



ICSC CCIM SIOR
INDIVIDUAL MEMBERS

RETAIL • INVESTMENTS • OFFICE • INDUSTRIAL • SITE SELECTION • LEASING • BUILD TO SUIT • BROKERAGE