

Industrial Warehouse / Shop

1244 Beech Ave.

Bismarck, ND



Kyle Holwagner, CCIM, SIOR

701.400.5373

Kyle@DanielCompanies.com

Kristyn Steckler

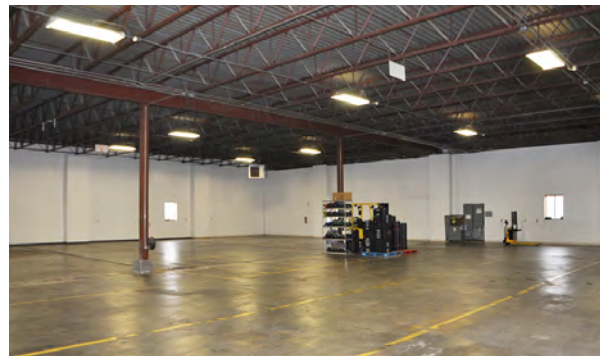
701.527.0138

Kristyn@DanielCompanies.com

DanielCompanies.com

Potential Uses:

- Warehouse Distribution
- Storage
- Manufacturing
- Assembly
- Service



SALE - \$699,900

- Building: 12,000 sf
- Office: 800 sf w/ Mezzanine
- Warehouse - 11,200 sf
- 18' Ceiling Height
- 14' x 14' Overhead Door
- 8' x 9' Dock Door
- Restroom
- Floor Drain
- Well, Septic Tank
- New Lighting
- New Unit Heaters

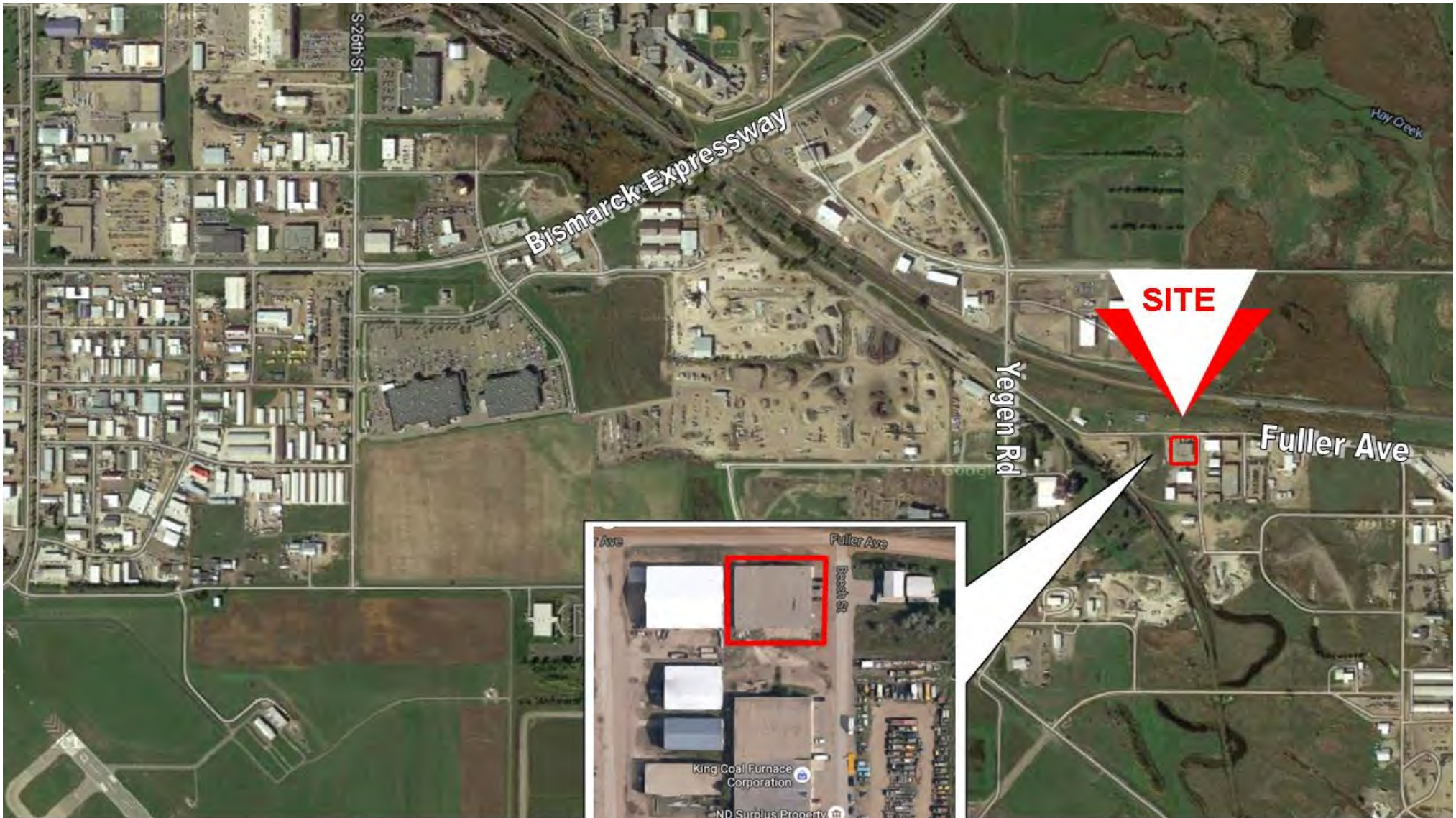
Broker does not guarantee the information describing this property. Interested parties are advised to independently verify the information through personal inspectors or with appropriate professionals.



Kyle Holwagner, CCIM, SIOR
701.400.5373
Kyle@DanielCompanies.com

Kristyn Steckler
701.527.0138
Kristyn@DanielCompanies.com

DanielCompanies.com





DANIEL COMPANIES

The Leader in Commercial Real Estate

Serving commercial real estate clients with unmatched market knowledge, experience, and a well-deserved reputation for integrity. They know the Bismarck-Mandan commercial real estate market better than anyone. This powerful team delivers powerful results.



Bill Daniel, CCIM, Broker
701.220.2455
Bill@DanielCompanies.com



Kyle Holwagner, CCIM, SIOR
701.400.5373
Kyle@DanielCompanies.com



Taylor Daniel, Commercial REALTOR®
701.391.4262
Taylor@DanielCompanies.com

701.223.8488
304 E ROSSER AVE #200
BISMARCK, ND 58501



ICSC CCIM SIOR
INDIVIDUAL MEMBERS

RETAIL • INVESTMENTS • OFFICE • INDUSTRIAL • SITE SELECTION • LEASING • BUILD TO SUIT • BROKERAGE