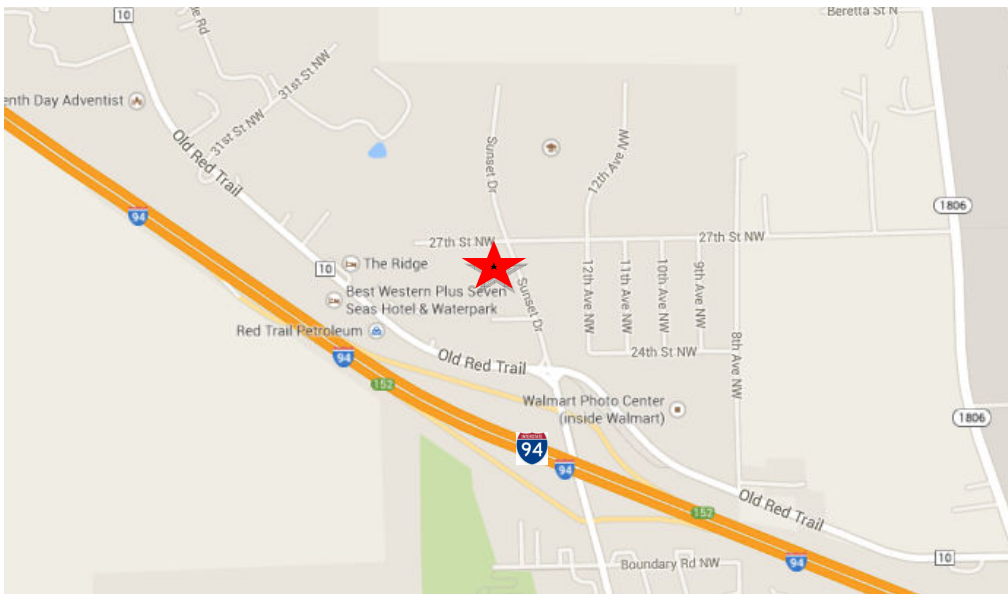


- Sale Price: \$499,851
\$13.50 psf
- Lot Size: 30,014 sf / .85 Ac
- Zoned: CB Commercial
- Easy Access to I-94, & Old Red Trail
- High Visibility & Easy Access
- Pylon Signage Opportunity
- Near Walmart, Thrifty White, Mandan Middle School, & Red Trail Elementary
- Great Corner Location



PRIME COMMERCIAL PARCEL
Off I-94 Exit 152 - 2705 Sunset Dr NW - Mandan, ND

Kyle Holwagner, CCIM, SIOR
701.400.5373
Kyle@DanielCompanies.com

Daniel Companies
304 E Rosser Ave Suite 200
Bismarck ND 58501
701.223.8488 | 701.223.8860 fax

Broker does not guarantee the information describing this property. Interested parties are advised to independently verify the information through personal inspectors or with appropriate professionals.

DanielCompanies.com