

# Cloverdale Industrial Park

## Mandan ND



Solutions for industrial growth and commercial  
Real Estate development

Build to Suit

Lease

5 Acre Master Planned Industrial Park



# Mandan Industrial Park 1st

2917 37th St NW—Mandan ND

Build to suit industrial buildings

10,000– 30,000sf tenants

6-8 months construction based on permitting

20' side walls

Loading docks

Yard space

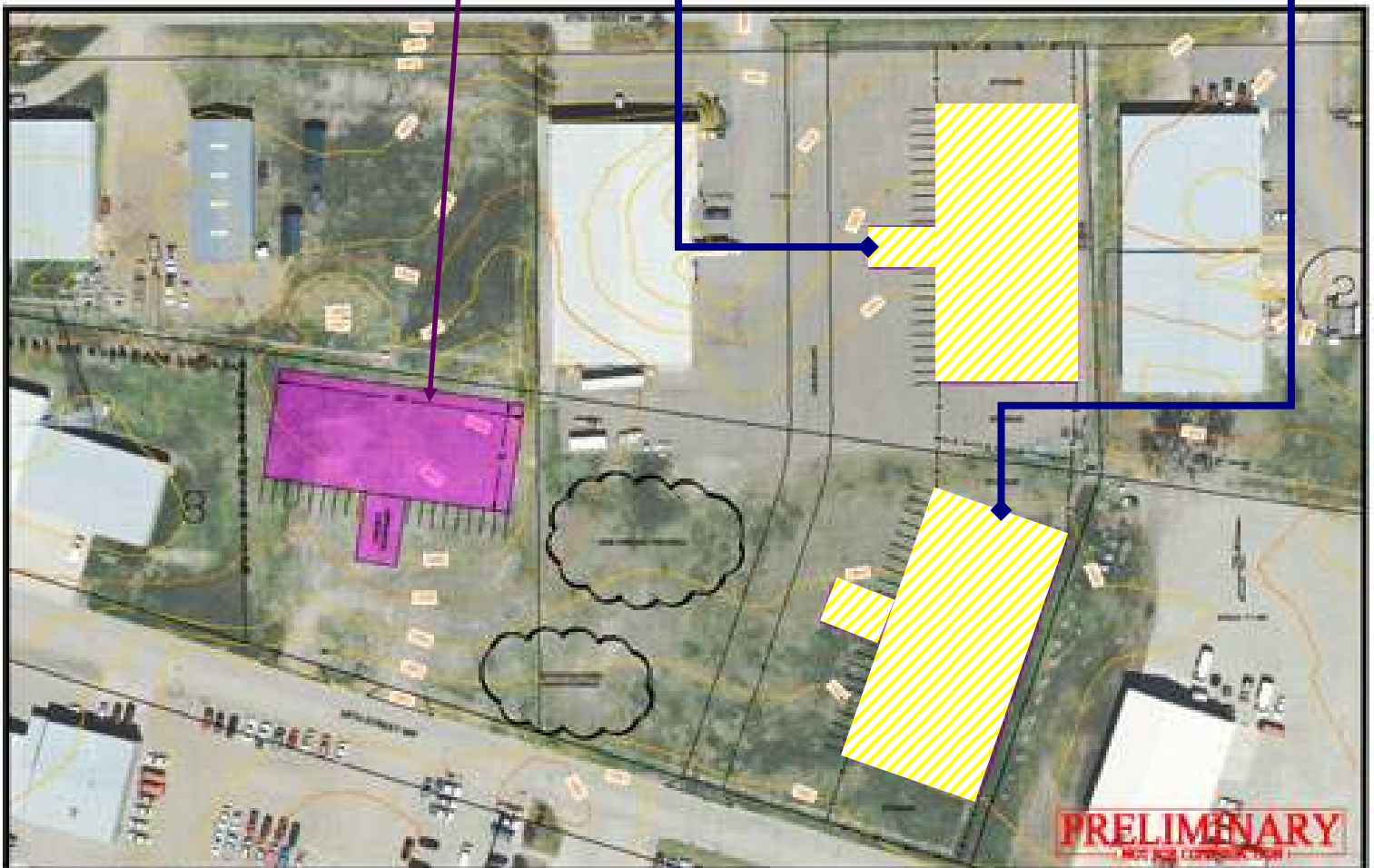
Custom office layout

Project Under  
Construction

AVAILABLE  
SITES

Novaspect

**BOS**  
SOLUTIONS





Easy Truck access

Direct access to Old Red Trail and I-94 Interstate

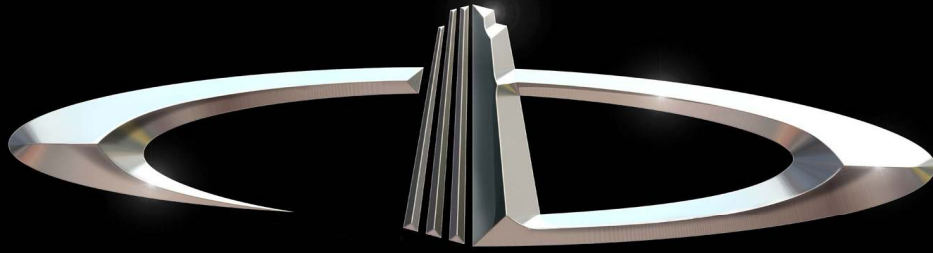
With in City Limits zoned industrial

City Water

Utilities: Natural gas, 3 phase power, T1 Capable telephone, City Sanitary sewer, City Street Lighting

DESTINATION	MILES	DRIVE TIME
BEULAH ND	72.81 Miles	1 Hour 16 Minutes
DICKINSON ND	93.58 Miles	1 Hour 23 Minutes
MINOT ND	117.10 Miles	1 Hour 59 Minutes
NEW TOWN ND	155.68 Miles	2 Hours 51 Minutes
WILLISTON ND	221.60 Miles	3 Hours 31 Minutes





# DANIEL COMPANIES

The Leader in Commercial Real Estate



Bill Daniel, CCIM

701 220 2455



Kyle Holwagner, CCIM

701 400 5373



Regina Crothers, REALTOR®

701 471 3140

304 E. Rosser Ave., Suite 200

Bismarck, ND 58501

Office: 701 223 8488

[DanielCompanies.com](http://DanielCompanies.com)



RETAIL • INVESTMENTS • OFFICE • INDUSTRIAL • SITE SELECTION • LEASING • BUILD TO SUIT • BROKERAGE