

66th Street Industrial Park

2245 & 2330 Fido Dr.

Bismarck, ND

22nd Ave. SE

66th St. SE

Fido Dr.

POPULAR LN

CHE

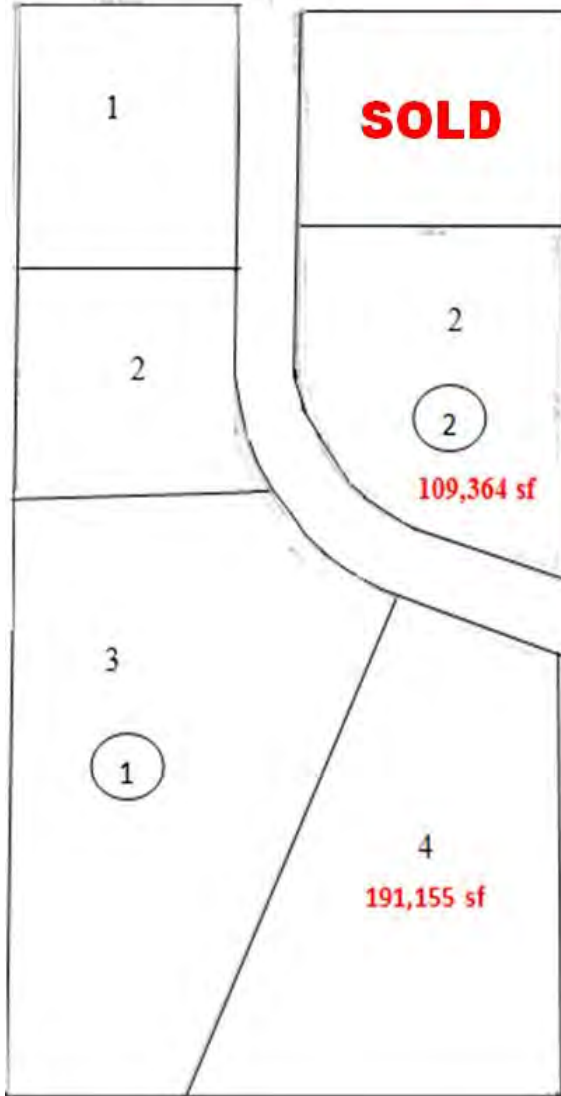


Kyle Holwagner, CCIM, SIOR
701.400.5373
Kyle@DanielCompanies.com

Kristyn Steckler
701.527.0138
Kristyn@DanielCompanies.com

DanielCompanies.com

22nd Avenue SE



Area Businesses

- In Lincoln's hottest new development area
- Club Fido
- Lincoln Cenex Convenience Store
- Dakota Community Bank
- St. Alexius Medical Center
- D.J.'s Tavern
- Tumbleweed Bar & Steak House
- Missouri Fence Co
- Mariner Construction
- T & M Electric
- South 40
- Lincoln Fitness
- Overhaul Salon & Tanning
- Z's Storage Rentals

Potential Uses:

- Warehouse
- Distribution
- Manufacturing
- Storage Units
- Business Park
- Industrial Uses
- Shop Space

FOR SALE:

- **Lot 2, Block 2 - 109,364 sf**
2245 Fido Dr.
Parcel: #39-138-79-01-02-020
2.51 Acres
Zoned MA
- **Lot 4, Block 1 - 191,155 sf**
2330 Fido Dr.
Parcel: #39-138-79-01-01-040
4.39 Acres
Zoned MA
- \$2.99 psf
- Lincoln Industrial Land
- Zoned MA
- Developer Will...Build to Suit

Broker does not guarantee the information describing this property. Interested parties are advised to independently verify the information through personal inspectors or with appropriate professionals.



Kyle Holwagner, CCIM, SIOR
701.400.5373
Kyle@DanielCompanies.com

Kristyn Steckler
701.527.0138
Kristyn@DanielCompanies.com

Site



Kyle Holwagner, CCIM, SIOR
701.400.5373
Kyle@DanielCompanies.com

Kristyn Steckler
701.527.0138
Kristyn@DanielCompanies.com

DanielCompanies.com



DANIEL COMPANIES

The Leader in Commercial Real Estate

Serving commercial real estate clients with unmatched market knowledge, experience, and a well-deserved reputation for integrity. They know the Bismarck-Mandan commercial real estate market better than anyone. This powerful team delivers powerful results.



Bill Daniel, CCIM, Broker
701.220.2455
Bill@DanielCompanies.com



Kyle Holwagner, CCIM, SIOR
701.400.5373
Kyle@DanielCompanies.com



Taylor Daniel, Commercial REALTOR®
701.391.4262
Taylor@DanielCompanies.com

701.223.8488
304 E ROSSER AVE #200
BISMARCK, ND 58501



ICSC CCIM SIOR
INDIVIDUAL MEMBERS

RETAIL • INVESTMENTS • OFFICE • INDUSTRIAL • SITE SELECTION • LEASING • BUILD TO SUIT • BROKERAGE