

Industrial Lot

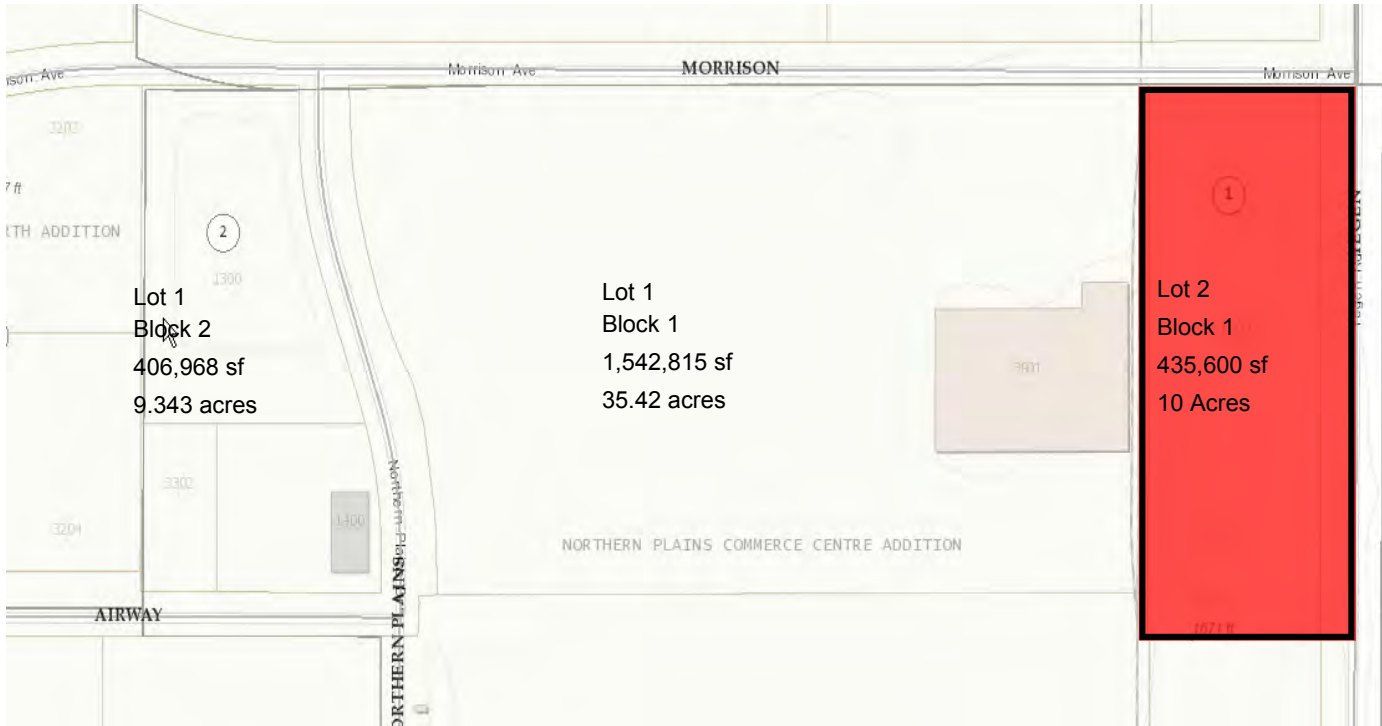
1300 Yegen Road
Bismarck, ND



Kyle Holwagner, CCIM, SIOR
701.400.5373
Kyle@DanielCompanies.com

Kristyn Steckler
701.527.0138
Kristyn@DanielCompanies.com

DanielCompanies.com



- Lot Size: 435,600 sf
10 acres
- Sale Price \$5.95 psf
\$2,591,820
- Zoned MA
- City Service Available
- Taxes \$8,946.50 (2017)
- Special Assessment
Installment \$426.18
Balance: \$1,666.70

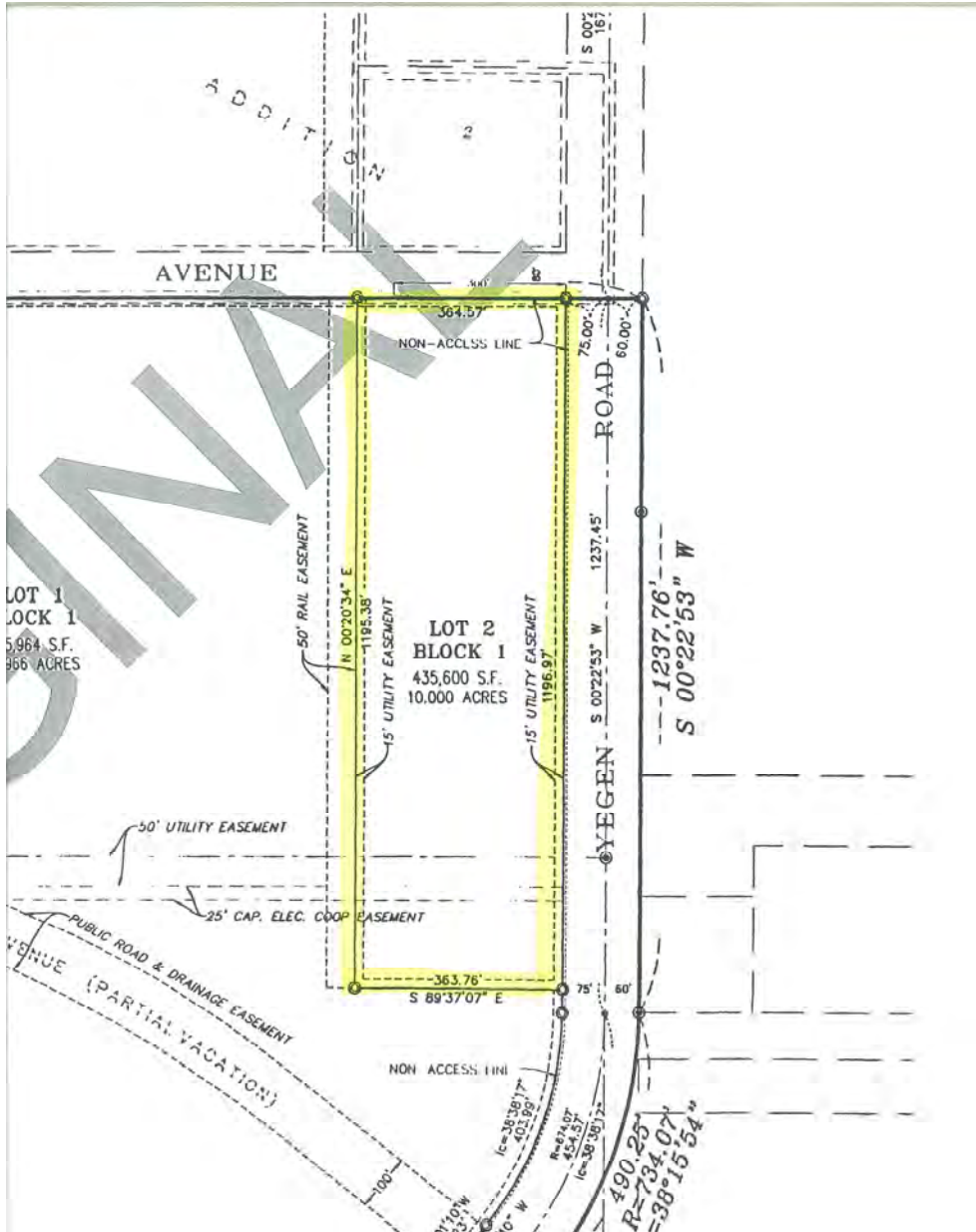
Broker does not guarantee the information describing this property. Interested parties are advised to independently verify the information through personal inspectors or with appropriate professionals.



Kyle Holwagner, CCIM, SIOR
701.400.5373
Kyle@DanielCompanies.com

Kristyn Steckler
701.527.0138
Kristyn@DanielCompanies.com

DanielCompanies.com



South Bismarck Location

- Doosan Material Handling Facility
- Winnelson Plumbing
- Hubbard Feeds
- ESCO
- Fed Ex Ground
- K&M Tire
- Fed Ex Freight
- Mariner Construction

Potential Uses:

- Distribution
- Manufacturing
- Warehousing
- Storage
- Shop
- Assembly
- Wholesale Trades



DANIEL COMPANIES

The Leader in Commercial Real Estate

Serving commercial real estate clients with unmatched market knowledge, experience, and a well-deserved reputation for integrity. They know the Bismarck-Mandan commercial real estate market better than anyone. This powerful team delivers powerful results.



Bill Daniel, CCIM, Broker
701.220.2455
Bill@DanielCompanies.com



Kyle Holwagner, CCIM, SIOR
701.400.5373
Kyle@DanielCompanies.com



Taylor Daniel, Commercial REALTOR®
701.391.4262
Taylor@DanielCompanies.com

701.223.8488
304 E ROSSER AVE #200
BISMARCK, ND 58501



RETAIL • INVESTMENTS • OFFICE • INDUSTRIAL • SITE SELECTION • LEASING • BUILD TO SUIT • BROKERAGE