

2 COMMERCIAL PARCELS
5429 & 5531 E. Main Ave. - Bismarck, ND

- Sale Price: \$450,000
- 114,120 sf Buildable @ \$439,200
est. @ \$3.85 psf
- 30,800 sf Floodplain @ \$10,800
est. @ \$.35 psf
- 29,320 sf Floodway
- Lot Size: 174,240 sf / 4 acres
Lot C Lot 1: 87,120 sf / 2 acres
Lot B Lot 1: 87,120 sf / 2 acres
- Zoned: CG Commercial
- No City Services
- Taxes: \$117, (2016)
No Specials at this time
- Lots to be sold together

Contact Information:

Kyle Holwagner, CCIM, SIOR
701.400.5373
Kyle@DanielCompanies.com

Daniel Companies
304 E Rosser Ave Suite 200
Bismarck ND 58501
701.223.8488 | 701.223.8860 fax

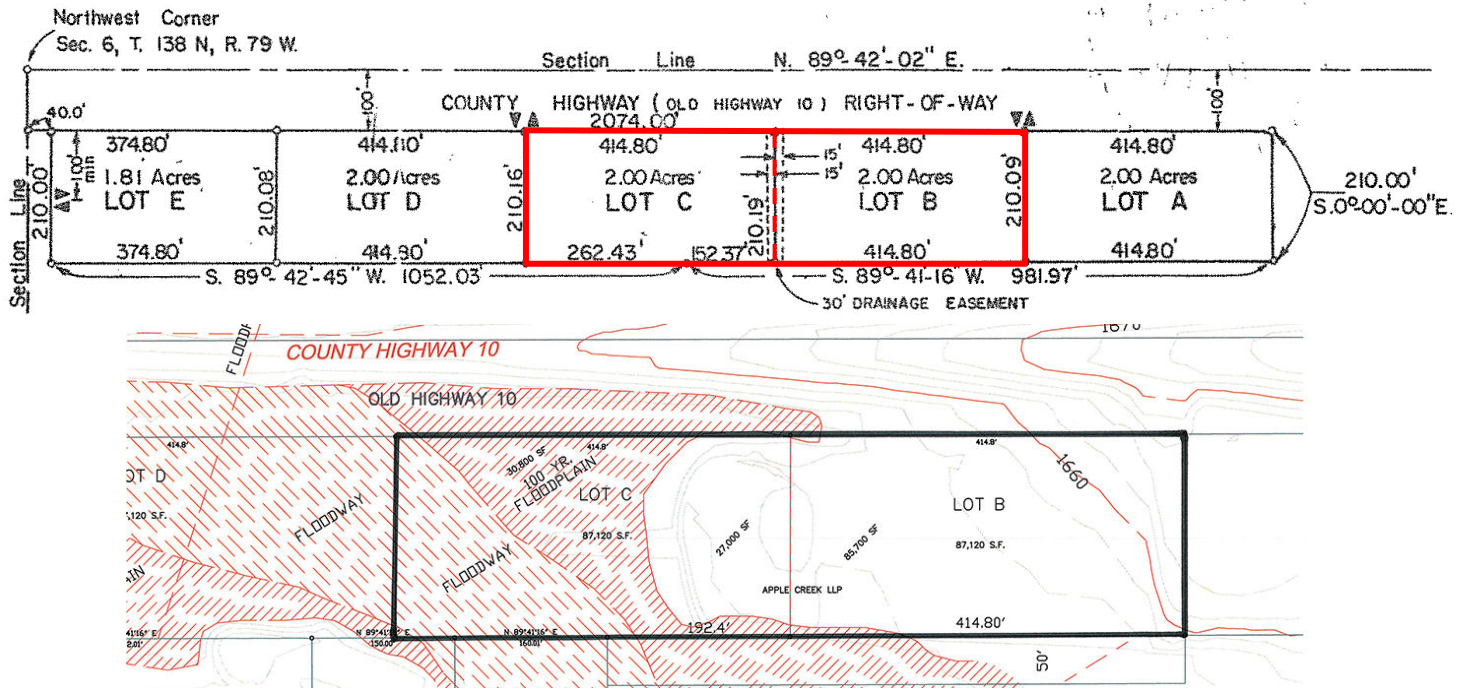
DanielCompanies.com

Broker does not guarantee the information describing this property. Interested parties are advised to independently verify the information through personal inspectors or with appropriate professionals.



The Leader In Commercial

Plat



- Seller retains right for future signage

Surrounding Business

- Midwest Business Park
- Bismarck Rural Fire Department
- Buckstop Junction
- ND Game & Fish
- Bismarck City Landfill
- River City Sports
- Subway
- Acme Tools
- Midwest Motor Express

Broker does not guarantee the information describing this property. Interested parties are advised to independently verify the information through personal inspectors or with appropriate professionals.



RETAIL • INVESTMENTS • OFFICE • INDUSTRIAL • SITE SELECTION • LEASING • BUILD TO SUIT • BROKERAGE

Aerial Vies



Broker does not guarantee the information describing this property. Interested parties are advised to independently verify the information through personal inspectors or with appropriate professionals.

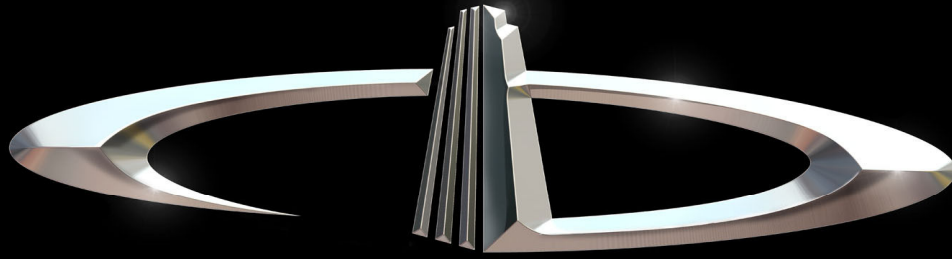
FOR SALE



DANIEL COMPANIES
The Leader in Commercial

701-225-8488

RETAIL • INVESTMENTS • OFFICE • INDUSTRIAL • SITE SELECTION • LEASING • BUILD TO SUIT • BROKERAGE



DANIEL COMPANIES

The Leader in Commercial Real Estate

Serving commercial real estate customers with unmatched market knowledge, experience, and well-deserved reputation for integrity.

They know the Bismarck-Mandan commercial real estate market better than anyone. This powerful team delivers powerful results.



Bill Daniel, CCIM
220-2455



Kyle Holwagner, CCIM, SIOR
400-5373



Taylor Daniel, REALTOR®
391-4262



Regina Crothers, REALTOR®
471-3140

304 E. Rosser Ave., Suite 200 Bismarck, ND 58501

Office: 701-223-8488 DanielCompanies.com



RETAIL • INVESTMENTS • OFFICE • INDUSTRIAL • SITE SELECTION • LEASING • BUILD TO SUIT • BROKERAGE