

Office Space - 2nd Floor

2400 E Broadway Ave

Bismarck, ND



Kyle Holwagner, CCIM, SIOR

701.400.5373

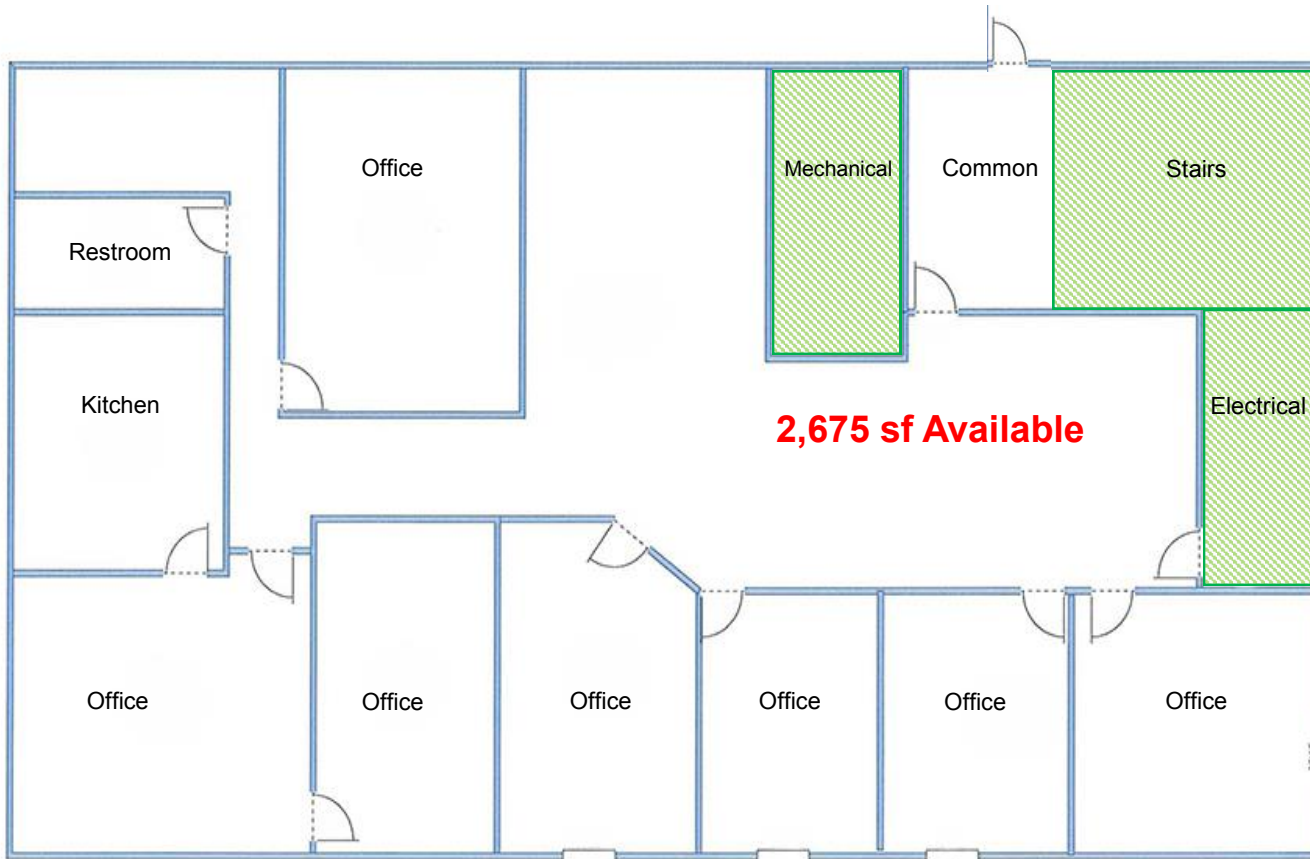
Kyle@DanielCompanies.com

Kristyn Steckler, Market Coordinator

701.527.0138

Kristyn@DanielCompanies.com

DanielCompanies.com



2nd Floor: 2,675 sf Available

- Lease: \$12.00 psf
- 7 Private Offices
- Kitchen
- Full Service Lease
- Off Street Parking
- ADA Restrooms
- Elevator
- Tenant Pays:
Janitorial
Light Bulbs
Carpet Cleaning
- New Flooring & Paint
- Good Access and Great Visibility

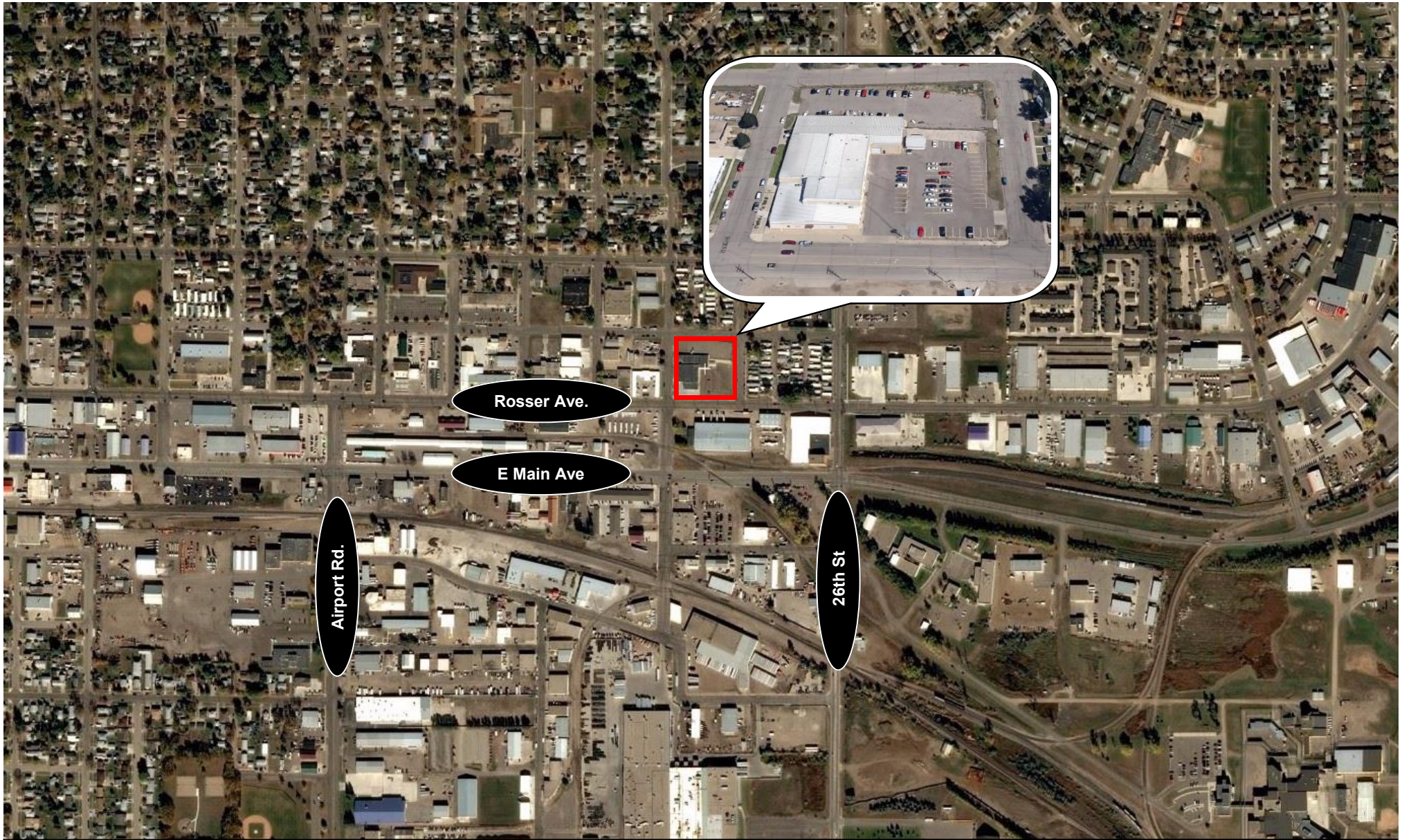
*** Not to scale for visual purpose only. Floor plan may vary.*



Kyle Holwagner, CCIM, SIOR
701.400.5373
Kyle@DanielCompanies.com

Kristyn Steckler, Market Coordinator
701.527.0138
Kristyn@DanielCompanies.com

DanielCompanies.com



Rosser Ave.

E Main Ave

Airport Rd.

26th St



Kyle Holwagner, CCIM, SIOR
701.400.5373
Kyle@DanielCompanies.com

Kristyn Steckler, Market Coordinator
701.527.0138
Kristyn@DanielCompanies.com

DanielCompanies.com



DANIEL COMPANIES

The Leader in Commercial Real Estate

Serving commercial real estate clients with unmatched market knowledge, experience, and a well-deserved reputation for integrity. They know the Bismarck-Mandan commercial real estate market better than anyone. This powerful team delivers powerful results.



Bill Daniel, CCIM, Broker
701.220.2455
Bill@DanielCompanies.com



Kyle Holwagner, CCIM, SIOR
701.400.5373
Kyle@DanielCompanies.com



Taylor Daniel, Commercial REALTOR®
701.391.4262
Taylor@DanielCompanies.com

701.223.8488
304 E ROSSER AVE #200
BISMARCK, ND 58501



ICSC CCIM SIOR
INDIVIDUAL MEMBERS

RETAIL • INVESTMENTS • OFFICE • INDUSTRIAL • SITE SELECTION • LEASING • BUILD TO SUIT • BROKERAGE