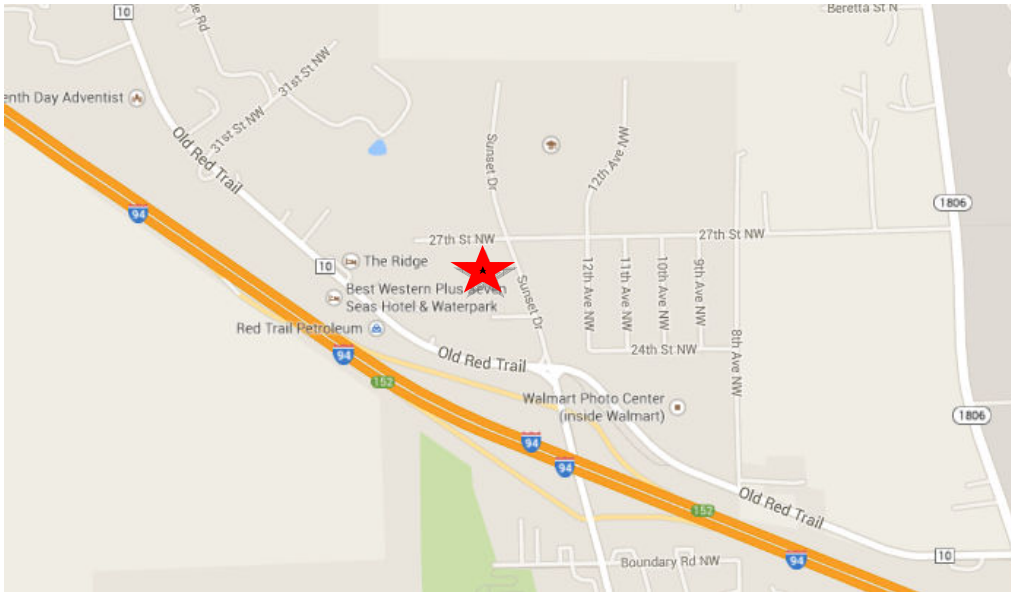


- Sale Price: \$750,000  
\$14.67 psf
- Lot Size: 51,308 sf / 1.18 Ac
- Zoned: CB Commercial
- Easy Access to I-94, Sunset Dr & Old Red Trail
- High Visibility & Easy Access
- Pylon Signage Opportunity
- Near Walmart, Thrifty White, Mandan Middle School, & Red Trail Elementary
- Great Corner Location



**PRIME COMMERCIAL PARCEL**

Off I-94 Exit 152 - Overlook Lane - Mandan, ND

**Contact Information:**

**Bill Daniel, CCIM**  
701.220.2455  
[Bill@DanielCompanies.com](mailto:Bill@DanielCompanies.com)

**Taylor Daniel, REALTOR®**  
701.391-4262  
[Taylor@DanielCompanies.com](mailto:Taylor@DanielCompanies.com)

**Kyle Holwagner, CCIM, SIOR**  
701.400.5373  
[Kyle@DanielCompanies.com](mailto:Kyle@DanielCompanies.com)

**Regina Crothers, REALTOR®**  
701.471.3140  
[Regina@DanielCompanies.com](mailto:Regina@DanielCompanies.com)

**Daniel Companies**  
304 E Rosser Ave Suite 200  
Bismarck ND 58501  
701.223.8488 | 701.223.8860 fax

Broker does not guarantee the information describing this property. Interested parties are advised to independently verify the information through personal inspectors or with appropriate professionals.

**DanielCompanies.com**